

For Research Use Only

# Chicken Ovalbumin Monoclonal antibody, PBS Only

Catalog Number: 67614-1-PBS



## Basic Information

Catalog Number:

67614-1-PBS

Size:

1mg/ml

Source:

Mouse

Isotype:

IgG1

GenBank Accession Number:

NM\_205152

GeneID (NCBI):

UNIPROT ID:

P01012

Full Name:

Calculated MW:

43 kDa

Observed MW:

43 kDa

Purification Method:

Protein A purification

CloneNo.:

1D3D5

## Applications

Tested Applications:

WB, Indirect ELISA

Species Specificity:

chicken

## Background Information

Ovalbumin, also named as OVA, is a storage protein of egg white. It belongs to the serpin superfamily, but unlike most serpins, it is not a serine protease inhibitor. This antibody is specific to ovalbumin of chicken.

## Storage

Storage:

Store at -80°C.

The product is shipped with ice packs. Upon receipt, store it immediately at -80°C

Storage Buffer:

PBS Only

For technical support and original validation data for this product please contact:

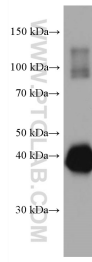
T: 4006900926

E: [Proteintech-CN@ptglab.com](mailto:Proteintech-CN@ptglab.com)

W: [ptgcn.com](http://ptgcn.com)

This product is exclusively available under Proteintech Group brand and is not available to purchase from any other manufacturer.

## Selected Validation Data



5 nL Chicken egg were subjected to SDS PAGE followed by western blot with 67614-1-Ig (Ovalbumin Antibody) at dilution of 1:100000 incubated at room temperature for 1.5 hours. This data was developed using the same antibody clone with 67614-1-PBS in a different storage buffer formulation.