

For Research Use Only

# Ovalbumin Monoclonal antibody

Catalog Number: 67614-1-Ig **8 Publications**



## Basic Information

Catalog Number:

67614-1-Ig

Source:

Mouse

Isotype:

IgG1

GenBank Accession Number:

NM\_205152

GeneID (NCBI):

UNIPROT ID:

P01012

Full Name:

Calculated MW:

43 kDa

Observed MW:

43 kDa

Purification Method:

Protein G purification

CloneNo.:

1D3D5

Recommended Dilutions:

WB: 1:20000-1:100000

## Applications

Tested Applications:

WB, ELISA

Cited Applications:

WB, IP

Species Specificity:

chicken

Cited Species:

human, mouse

Positive Controls:

WB: Chicken egg,

## Background Information

Ovalbumin, also named as OVA, is a storage protein of egg white. It belongs to the serpin superfamily, but unlike most serpins, it is not a serine protease inhibitor. This antibody is specific to ovalbumin of chicken.

## Notable Publications

Author	Pubmed ID	Journal	Application
Wenhao Zhang	41249116	Signal Transduct Target Ther	WB
Qing You	40523938	Nat Nanotechnol	WB
Jiangbin Chen	40241233	J Extracell Vesicles	

## Storage

Storage:

Store at -20°C. Stable for one year after shipment.

Storage Buffer:

PBS with 0.02% sodium azide and 50% glycerol, pH7.3

Aliquoting is unnecessary for -20°C storage

For technical support and original validation data for this product please contact:

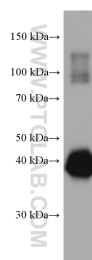
T: 4006900926

E: [Proteintech-CN@ptglab.com](mailto:Proteintech-CN@ptglab.com)

W: [ptgcn.com](http://ptgcn.com)

This product is exclusively available under Proteintech Group brand and is not available to purchase from any other manufacturer.

## Selected Validation Data



5 nL Chicken egg were subjected to SDS PAGE followed by western blot with 67614-1-Ig (Ovalbumin Antibody) at dilution of 1:100000 incubated at room temperature for 1.5 hours.