

# MYBPC3 Monoclonal antibody

Catalog Number: 67608-1-Ig

## Basic Information

<b>Catalog Number:</b> 67608-1-Ig	<b>GenBank Accession Number:</b> BC151211	<b>Purification Method:</b> Protein A purification
<b>Size:</b> 1000 µg/ml	<b>GeneID (NCBI):</b> 4607	<b>CloneNo.:</b> 3C8F8
<b>Source:</b> Mouse	<b>UNIPROT ID:</b> Q14896	<b>Recommended Dilutions:</b> WB 1:5000-1:50000 IHC 1:50-1:500 IF-P 1:200-1:800
<b>Isotype:</b> IgG1	<b>Full Name:</b> myosin binding protein C, cardiac	
<b>Immunogen Catalog Number:</b> AG15848	<b>Calculated MW:</b> 1274 aa, 141 kDa <b>Observed MW:</b> 140-150 kDa	

## Applications

<b>Tested Applications:</b> IF-P, IHC, WB, ELISA	<b>Positive Controls:</b>
<b>Species Specificity:</b> Human, mouse, rat, pig, rabbit	<b>WB :</b> mouse heart tissue, H9C2 cells, rabbit heart tissue, pig heart tissue
<b>Note-IHC: suggested antigen retrieval with TE buffer pH 9.0; (*) Alternatively, antigen retrieval may be performed with citrate buffer pH 6.0</b>	<b>IHC :</b> human heart tissue, rat heart tissue
	<b>IF-P :</b> rat heart tissue,

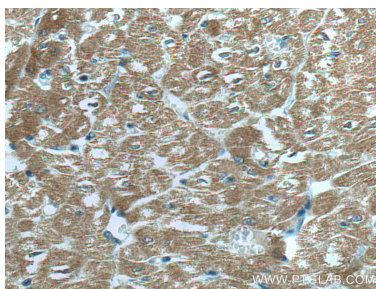
## Background Information

MYBPC3 belongs to the immunoglobulin superfamily and MyBP family. MYBPC3 located in the crossbridge region of vertebrate striated muscle a bands. In vitro it binds MHC, F-actin and native thin filaments, and modifies the activity of actin-activated myosin ATPase. It may modulate muscle contraction or may play a more structural role. Defects in MYBPC3 are the cause of cardiomyopathy familial hypertrophic type 4 (CMH4).

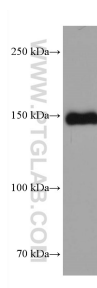
## Storage

**Storage:**  
Store at -20°C. Stable for one year after shipment.  
**Storage Buffer:**  
PBS with 0.02% sodium azide and 50% glycerol pH 7.3.  
Aliquoting is unnecessary for -20°C storage

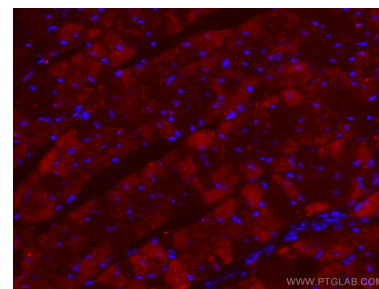
## Selected Validation Data



Immunohistochemical analysis of paraffin-embedded human heart tissue slide using 67608-1-Ig (MYBPC3 antibody) at dilution of 1:200 (under 40x lens). Heat mediated antigen retrieval with Tris-EDTA buffer (pH 9.0).



mouse heart tissue were subjected to SDS PAGE followed by western blot with 67608-1-Ig (MYBPC3 antibody) at dilution of 1:20000 incubated at room temperature for 1.5 hours.



Immunofluorescent analysis of (4% PFA) fixed rat heart tissue using MYBPC3 antibody (67608-1-Ig, Clone: 3C8F8) at dilution of 1:400 and CoraLite®488-Conjugated AffiniPure Goat Anti-Mouse IgG(H+L).