

For Research Use Only

SCLY Monoclonal antibody, PBS Only (Detector)

Catalog Number: 67606-1-PBS



Basic Information

Catalog Number:

67606-1-PBS

Size:

1mg/ml

Source:

Mouse

Isotype:

IgG1

Immunogen Catalog Number:

AG28841

GenBank Accession Number:

BC007891

GeneID (NCBI):

51540

UNIPROT ID:

Q96L15

Full Name:

selenocysteine lyase

Calculated MW:

49 kDa

Observed MW:

48 kDa

Purification Method:

Protein A purification

CloneNo.:

3A2G7

Applications

Tested Applications:

WB, IHC, Cytometric bead array, Indirect ELISA

Species Specificity:

human, rat

Background Information

Storage

Storage:

Store at -80°C.

The product is shipped with ice packs. Upon receipt, store it immediately at -80°C

Storage Buffer:

PBS Only

For technical support and original validation data for this product please contact:

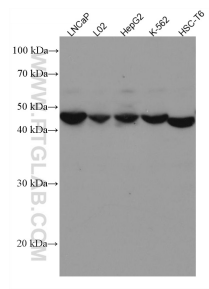
T: 4006900926

E: Proteintech-CN@ptglab.com

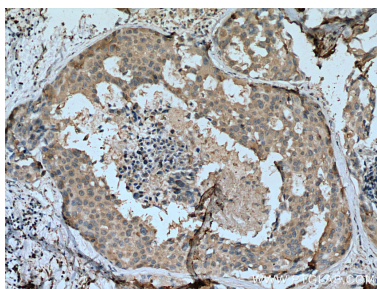
W: ptgcn.com

This product is exclusively available under Proteintech Group brand and is not available to purchase from any other manufacturer.

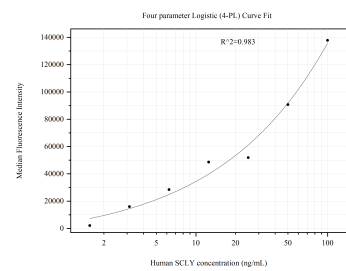
Selected Validation Data



Various lysates were subjected to SDS PAGE followed by western blot with 67606-1-Ig (SCLY antibody) at dilution of 1:2000 incubated at room temperature for 1.5 hours. This data was developed using the same antibody clone with 67606-1-PBS in a different storage buffer formulation.



Immunohistochemical analysis of paraffin-embedded human breast cancer tissue slide using 67606-1-Ig (SCLY antibody) at dilution of 1:1000 (under 10x lens). Heat mediated antigen retrieval with Tris-EDTA buffer (pH 9.0). This data was developed using the same antibody clone with 67606-1-PBS in a different storage buffer formulation.



Cytometric bead array standard curve of MP51242-1, SCLY Monoclonal Matched Antibody Pair, PBS Only. Capture antibody: 67606-2-PBS. Detection antibody: 67606-1-PBS. Standard: Ag28841. Range: 1.563-100 ng/mL.