

For Research Use Only

SCLY Monoclonal antibody

Catalog Number: 67606-1-Ig



Basic Information

Catalog Number:

67606-1-Ig

Size:

1700 µg/ml

Source:

Mouse

Isotype:

IgG1

Immunogen Catalog Number:

AG28841

GenBank Accession Number:

BC007891

GeneID (NCBI):

51540

UNIPROT ID:

Q96I15

Full Name:

selenocysteine lyase

Calculated MW:

49 kDa

Observed MW:

48 kDa

Purification Method:

Protein G purification

CloneNo.:

3A2G7

Recommended Dilutions:

WB 1:1000-1:4000

IHC 1:500-1:2000

Applications

Tested Applications:

IHC, WB, ELISA

Species Specificity:

Human, rat

Note-IHC: suggested antigen retrieval with TE buffer pH 9.0; (*) Alternatively, antigen retrieval may be performed with citrate buffer pH 6.0

Positive Controls:

WB : LNCaP cells, L02 cells, HepG2 cells, K-562 cells, HSC-T6 cells

IHC : human breast cancer tissue,

Background Information

Storage

Storage:

Store at -20°C.

Storage Buffer:

PBS with 0.02% sodium azide and 50% glycerol pH 7.3.

Aliquoting is unnecessary for -20°C storage

For technical support and original validation data for this product please contact:

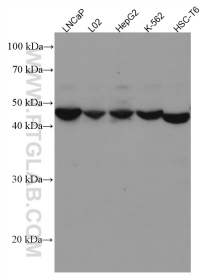
T: 4006900926

E: Proteintech-CN@ptglab.com

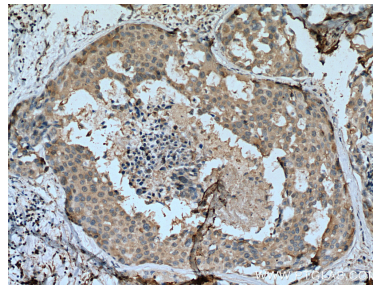
W: ptgcn.com

This product is exclusively available under Proteintech Group brand and is not available to purchase from any other manufacturer.

Selected Validation Data



Various lysates were subjected to SDS PAGE followed by western blot with 67606-1-Ig (SCLY antibody) at dilution of 1:2000 incubated at room temperature for 1.5 hours.



Immunohistochemical analysis of paraffin-embedded human breast cancer tissue slide using 67606-1-Ig (SCLY antibody) at dilution of 1:1000 (under 10x lens). Heat mediated antigen retrieval with Tris-EDTA buffer (pH 9.0).