

PNLIPRP1 Monoclonal antibody

Catalog Number: 67603-1-Ig

Basic Information

Catalog Number:

67603-1-Ig

Size:

1000 µg/ml

Source:

Mouse

Isotype:

IgG2b

Immunogen Catalog Number:

AG26350

GenBank Accession Number:

BC025784

GeneID (NCBI):

5407

UNIPROT ID:

P54315

Full Name:

pancreatic lipase-related protein 1

Calculated MW:

467 aa, 52 kDa

Observed MW:

51 kDa

Purification Method:

Protein A purification

CloneNo.:

1F11E6

Recommended Dilutions:

WB 1:5000-1:50000

IHC 1:500-1:2000

Applications

Tested Applications:

IHC, WB, ELISA

Species Specificity:

Human, mouse, rat, pig

**Note-IHC: suggested antigen retrieval with
TE buffer pH 9.0; (*) Alternatively, antigen
retrieval may be performed with citrate
buffer pH 6.0**

Positive Controls:

WB : pig pancreas tissue, rat pancreas tissue, mouse
pancreas tissue

IHC : rat pancreas tissue,

Background Information

Storage

Storage:

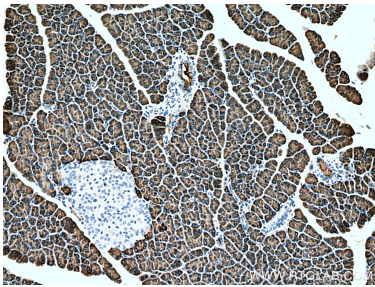
Store at -20°C. Stable for one year after shipment.

Storage Buffer:

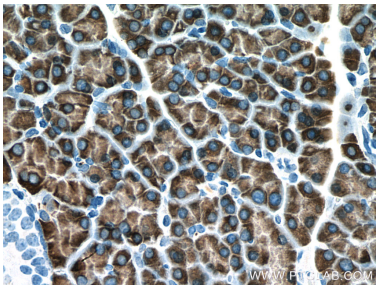
PBS with 0.02% sodium azide and 50% glycerol pH 7.3.

Aliquoting is unnecessary for -20°C storage

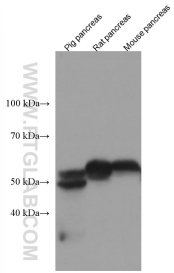
Selected Validation Data



Immunohistochemical analysis of paraffin-embedded rat pancreas tissue slide using 67603-1-Ig (PNLI PRP1 antibody) at dilution of 1:1000 (under 10x lens). Heat mediated antigen retrieval with Tris-EDTA buffer (pH 9.0).



Immunohistochemical analysis of paraffin-embedded rat pancreas tissue slide using 67603-1-Ig (PNLI PRP1 antibody) at dilution of 1:1000 (under 40x lens). Heat mediated antigen retrieval with Tris-EDTA buffer (pH 9.0).



pig pancreas tissue were subjected to SDS PAGE followed by western blot with 67603-1-Ig (PNLI PRP1 antibody) at dilution of 1:10000 incubated at room temperature for 1.5 hours.