

For Research Use Only

# GSS Monoclonal antibody, PBS Only

Catalog Number: 67598-1-PBS

Featured Product



## Basic Information

Catalog Number:

67598-1-PBS

Size:

1 mg/ml

Source:

Mouse

Isotype:

IgG1

Immunogen Catalog Number:

AG8354

GenBank Accession Number:

BC007927

GeneID (NCBI):

2937

UNIPROT ID:

P48637

Full Name:

glutathione synthetase

Calculated MW:

474 aa, 52 kDa

Observed MW:

52 kDa

Purification Method:

Protein A purification

CloneNo.:

1F12G1

## Applications

Tested Applications:

WB, IHC, IF, ELISA

Species Specificity:

Human, Mouse, Rat, pig

## Background Information

### Storage

Storage:

Store at -80°C.

The product is shipped with ice packs. Upon receipt, store it immediately at -80°C

Storage Buffer:

PBS only

For technical support and original validation data for this product please contact:

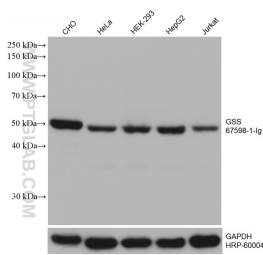
T: 4006900926

E: [Proteintech-CN@ptglab.com](mailto:Proteintech-CN@ptglab.com)

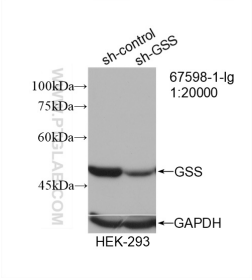
W: [ptgcn.com](http://ptgcn.com)

This product is exclusively available under Proteintech Group brand and is not available to purchase from any other manufacturer.

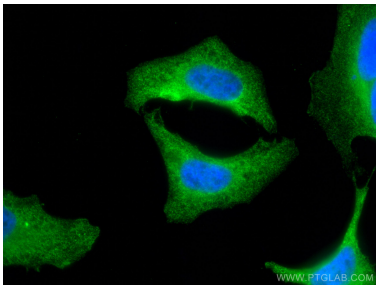
Selected Validation Data



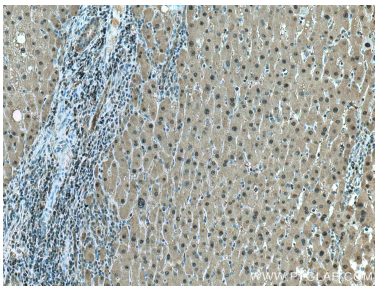
Various lysates were subjected to SDS PAGE followed by western blot with 67598-1-Ig (GSS antibody) at dilution of 1:20000 incubated at room temperature for 1.5 hours. The membrane was stripped and reblotted with HRP-conjugated GAPDH Monoclonal antibody (HRP-60004) as loading control. This data was developed using the same antibody clone with 67598-1-PBS in a different storage buffer formulation.



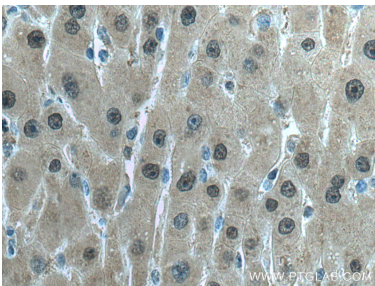
WB result of GSS antibody (67598-1-Ig; 1:20000; incubated at room temperature for 1.5 hours) with sh-Control and sh-GSS transfected HEK-293 cells. This data was developed using the same antibody clone with 67598-1-PBS in a different storage buffer formulation.



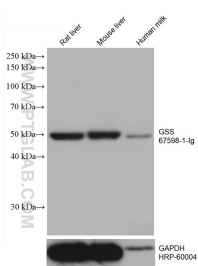
Immunofluorescent analysis of (4% PFA) fixed HeLa cells using GSS antibody (67598-1-Ig. Clone: 1F12G1 ) at dilution of 1:400 and CoraLite®488-Conjugated AffiniPure Goat Anti-Mouse IgG(H+L). This data was developed using the same antibody clone with 67598-1-PBS in a different storage buffer formulation.



Immunohistochemical analysis of paraffin-embedded human liver cancer tissue slide using 67598-1-Ig (GSS antibody) at dilution of 1:1000 (under 10x lens). Heat mediated antigen retrieval with Tris-EDTA buffer (pH 9.0). This data was developed using the same antibody clone with 67598-1-PBS in a different storage buffer formulation.



Immunohistochemical analysis of paraffin-embedded human liver cancer tissue slide using 67598-1-Ig (GSS antibody) at dilution of 1:1000 (under 40x lens). Heat mediated antigen retrieval with Tris-EDTA buffer (pH 9.0). This data was developed using the same antibody clone with 67598-1-PBS in a different storage buffer formulation.



Various lysates were subjected to SDS PAGE followed by western blot with 67598-1-Ig (GSS antibody) at dilution of 1:20000 incubated at room temperature for 1.5 hours. The membrane was stripped and reblotted with HRP-conjugated GAPDH Monoclonal antibody (HRP-60004) as loading control. This data was developed using the same antibody clone with 67598-1-PBS in a different storage buffer formulation.