

For Research Use Only

# Importin Beta Monoclonal antibody, PBS Only

Catalog Number: 67597-1-PBS



## Basic Information

Catalog Number: 67597-1-PBS	GenBank Accession Number: BC003572	Purification Method: Protein A purification
Size: 1mg/ml	GeneID (NCBI): 3837	CloneNo.: 1A12B1
Source: Mouse	UNIPROT ID: Q14974	
Isotype: IgG2b	Full Name: karyopherin (importin) beta 1	
Immunogen Catalog Number: AG23094	Calculated MW: 97 kDa	
	Observed MW: 95-97 kDa	

## Applications

Tested Applications:  
WB, IHC, FC (Intra), Indirect ELISA

Species Specificity:  
human

## Background Information

Importin beta1, also known karyopherin beta or KPNB1, is a nuclear transport receptor that plays a key role in the nuclear import process. Importin beta1 and importin alpha work in concert to transport cargo into the nucleus, functioning as an essential component of the classical nuclear localization signal (NLS) pathway. Elevated expression of importin beta1 has been found in cervical tumors. (22125623)

## Storage

Storage:  
Store at -80°C.  
**The product is shipped with ice packs. Upon receipt, store it immediately at -80°C**

Storage Buffer:  
PBS Only

For technical support and original validation data for this product please contact:

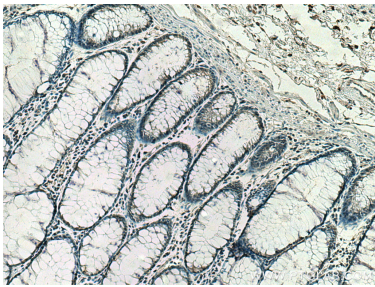
T: 4006900926

E: [Proteintech-CN@ptglab.com](mailto:Proteintech-CN@ptglab.com)

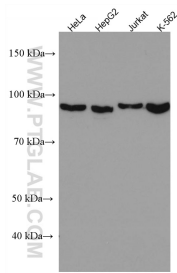
W: [ptgcn.com](http://ptgcn.com)

**This product is exclusively available under Proteintech Group brand and is not available to purchase from any other manufacturer.**

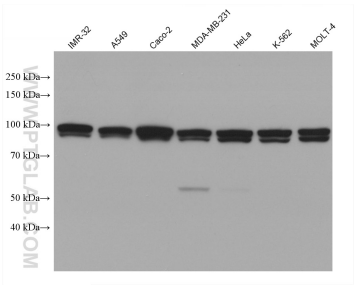
Selected Validation Data



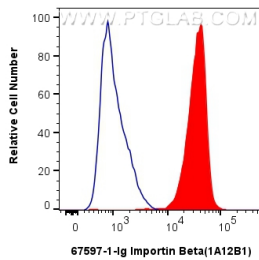
Immunohistochemical analysis of paraffin-embedded human colon cancer tissue slide using 67597-1-Ig (Importin beta antibody) at dilution of 1:400 (under 10x lens). Heat mediated antigen retrieval with Tris-EDTA buffer (pH 9.0). This data was developed using the same antibody clone with 67597-1-PBS in a different storage buffer formulation.



Various lysates were subjected to SDS PAGE followed by western blot with 67597-1-Ig (Importin beta antibody) at dilution of 1:5000 incubated at room temperature for 1.5 hours. This data was developed using the same antibody clone with 67597-1-PBS in a different storage buffer formulation.



Various lysates were subjected to SDS PAGE followed by western blot with 67597-1-Ig (Importin Beta antibody) at dilution of 1:20000 incubated at room temperature for 1.5 hours. This data was developed using the same antibody clone with 67597-1-PBS in a different storage buffer formulation.



1X10<sup>6</sup> Jurkat cells were intracellularly stained with 0.4 ug Anti-Human Importin Beta (67597-1-Ig, Clone:1A12B1) and CoraLite®488-Conjugated AffiniPure Goat Anti-Mouse IgG(H+L) at dilution 1:1000 (red), or 0.4 ug Mouse IgG2b Isotype Control (MPC-11) (65128-1-Ig, Clone: MPC-11) (blue). Cells were fixed and permeabilized with True-Nuclear Transcription Factor Buffer Set. This data was developed using the same antibody clone with 67597-1-PBS in a different storage