

For Research Use Only

Importin Beta Monoclonal antibody

Catalog Number: 67597-1-Ig



Basic Information

Catalog Number: 67597-1-Ig	GenBank Accession Number: BC003572	Purification Method: Protein A purification
Size: 1500 µg/ml	GeneID (NCBI): 3837	CloneNo.: 1A12B1
Source: Mouse	UNIPROT ID: Q14974	Recommended Dilutions: WB 1:2000-1:6000 IHC 1:200-1:800
Isotype: IgG2b	Full Name: karyopherin (importin) beta 1	
Immunogen Catalog Number: AG23094	Calculated MW: 97 kDa	
	Observed MW: 95-97 kDa	

Applications

Tested Applications:

FC, IHC, WB, ELISA

Species Specificity:

Human

Note-IHC: suggested antigen retrieval with TE buffer pH 9.0; (*) Alternatively, antigen retrieval may be performed with citrate buffer pH 6.0

Positive Controls:

WB : HeLa cells, HepG2 cells, Jurkat cells, K-562 cells

IHC : human colon cancer tissue,

Background Information

Importin beta1, also known karyopherin beta or KPNB1, is a nuclear transport receptor that plays a key role in the nuclear import process. Importin beta1 and importin alpha work in concert to transport cargo into the nucleus, functioning as an essential component of the classical nuclear localization signal (NLS) pathway. Elevated expression of importin beta1 has been found in cervical tumors. (22125623)

Storage

Storage:

Store at -20°C. Stable for one year after shipment.

Storage Buffer:

PBS with 0.02% sodium azide and 50% glycerol pH 7.3.

Aliquoting is unnecessary for -20°C storage

For technical support and original validation data for this product please contact:

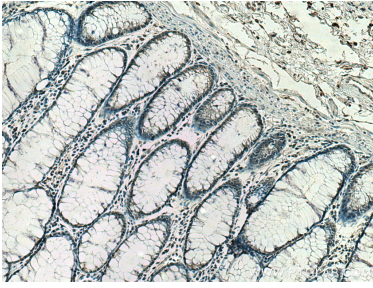
T: 4006900926

E: Proteintech-CN@ptglab.com

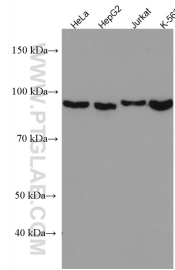
W: ptgcn.com

This product is exclusively available under Proteintech Group brand and is not available to purchase from any other manufacturer.

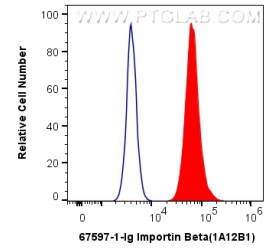
Selected Validation Data



Immunohistochemical analysis of paraffin-embedded human colon cancer tissue slide using 67597-1-Ig (Importin beta antibody) at dilution of 1:400 (under 10x lens). Heat mediated antigen retrieval with Tris-EDTA buffer (pH 9.0).



Various lysates were subjected to SDS PAGE followed by western blot with 67597-1-Ig (Importin beta antibody) at dilution of 1:5000 incubated at room temperature for 1.5 hours.



1X10⁶ Jurkat cells were intracellularly stained with 0.5 ug Anti-Human Importin Beta (67597-1-Ig, Clone:1A12B1) and Coralite@488-Conjugated AffiniPure Goat Anti-Mouse IgG(H+L) at dilution 1:1000 (red), or 0.5 ug Control Antibody. Cells were fixed with 4% PFA and permeabilized with Flow Cytometry Perm Buffer (PF00011-C).