

For Research Use Only

Syntabulin Monoclonal antibody, PBS Only

Catalog Number: 67595-1-PBS



Basic Information

Catalog Number:

67595-1-PBS

Size:

1mg/ml

Source:

Mouse

Isotype:

IgG2b

Immunogen Catalog Number:

AG9376

GenBank Accession Number:

BC012082

GeneID (NCBI):

55638

UNIPROT ID:

Q9NX95

Full Name:

Golgi-localized protein

Calculated MW:

662 aa, 72 kDa

Observed MW:

90 kDa

Purification Method:

Protein A purification

CloneNo.:

3B11C5

Applications

Tested Applications:

WB, Indirect ELISA

Species Specificity:

human

Background Information

Storage

Storage:

Store at -80°C.

The product is shipped with ice packs. Upon receipt, store it immediately at -80°C

Storage Buffer:

PBS Only

For technical support and original validation data for this product please contact:

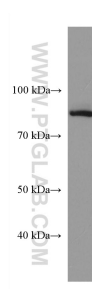
T: 4006900926

E: Proteintech-CN@ptglab.com

W: ptgcn.com

This product is exclusively available under Proteintech Group brand and is not available to purchase from any other manufacturer.

Selected Validation Data



HeLa cells were subjected to SDS PAGE followed by western blot with 67595-1-Ig (Syntabulin antibody) at dilution of 1:3000 incubated at room temperature for 1.5 hours. This data was developed using the same antibody clone with 67595-1-PBS in a different storage buffer formulation.