

For Research Use Only

Syntabulin Monoclonal antibody

Catalog Number: 67595-1-Ig



Basic Information

Catalog Number:

67595-1-Ig

Concentration:

1000 ug/ml

Source:

Mouse

Isotype:

IgG2b

Immunogen Catalog Number:

AG9376

GenBank Accession Number:

BC012082

GeneID (NCBI):

55638

UNIPROT ID:

Q9NX95

Full Name:

Golgi-localized protein

Calculated MW:

662 aa, 72 kDa

Observed MW:

90 kDa

Purification Method:

Protein A purification

CloneNo.:

3B11C5

Recommended Dilutions:

WB 1:1000-1:6000

Applications

Tested Applications:

WB, ELISA

Species Specificity:

human

Positive Controls:

WB : HeLa cells, HepG2 cells

Background Information

Storage

Storage:

Store at -20°C. Stable for one year after shipment.

Storage Buffer:

PBS with 0.02% sodium azide and 50% glycerol, pH7.3

Aliquoting is unnecessary for -20°C storage

For technical support and original validation data for this product please contact:

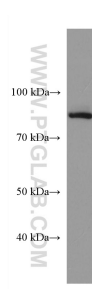
T: 4006900926

E: Proteintech-CN@ptglab.com

W: ptgcn.com

This product is exclusively available under Proteintech Group brand and is not available to purchase from any other manufacturer.

Selected Validation Data



HeLa cells were subjected to SDS PAGE followed by western blot with 67595-1-Ig (Syntabulin antibody) at dilution of 1:3000 incubated at room temperature for 1.5 hours.