

For Research Use Only

Mitoferrin 1 Monoclonal antibody, PBS Only



Catalog Number: 67593-1-PBS

Basic Information

Catalog Number:

67593-1-PBS

Size:

1 mg/ml

Source:

Mouse

Isotype:

IgG1

Immunogen Catalog Number:

AG26216

GenBank Accession Number:

BC132799

GeneID (NCBI):

51312

UNIPROT ID:

Q9NYZ2

Full Name:

solute carrier family 25, member 37

Observed MW:

40 kDa

Purification Method:

Protein G purification

CloneNo.:

1B1B2

Applications

Tested Applications:

WB, Indirect ELISA

Species Specificity:

Human

Background Information

Storage

Storage:

Store at -80°C.

The product is shipped with ice packs. Upon receipt, store it immediately at -80°C

Storage Buffer:

PBS Only

For technical support and original validation data for this product please contact:

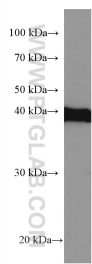
T: 4006900926

E: Proteintech-CN@ptglab.com

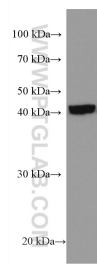
W: ptgcn.com

This product is exclusively available under Proteintech Group brand and is not available to purchase from any other manufacturer.

Selected Validation Data



TF-1 cells were subjected to SDS PAGE followed by western blot with 67593-1-Ig (Mitoferin 1 antibody) at dilution of 1:3000 incubated at room temperature for 1.5 hours. This data was developed using the same antibody clone with 67593-1-PBS in a different storage buffer formulation.



human placenta tissue were subjected to SDS PAGE followed by western blot with 67593-1-Ig (Mitoferin 1 antibody) at dilution of 1:3000 incubated at room temperature for 1.5 hours. This data was developed using the same antibody clone with 67593-1-PBS in a different storage buffer formulation.