

For Research Use Only

Mitoferrin 1 Monoclonal antibody

Catalog Number: 67593-1-Ig



Basic Information

Catalog Number:

67593-1-Ig

Size:

2000 µg/ml

Source:

Mouse

Isotype:

IgG1

Immunogen Catalog Number:

AG26216

GenBank Accession Number:

BC132799

GeneID (NCBI):

51312

UNIPROT ID:

Q9NYZ2

Full Name:

solute carrier family 25, member 37

Observed MW:

40 kDa

Purification Method:

Protein G purification

CloneNo.:

1B1B2

Recommended Dilutions:

WB 1:1000-1:6000

Applications

Tested Applications:

WB, ELISA

Species Specificity:

Human

Positive Controls:

WB: human placenta tissue, HepG2 cells, human spleen tissue, K-562 cells, LO2 cells, LNCaP cells, TF-1 cells

Background Information

Storage

Storage:

Store at -20°C.

Storage Buffer:

PBS with 0.02% sodium azide and 50% glycerol pH 7.3.

Aliquoting is unnecessary for -20°C storage

For technical support and original validation data for this product please contact:

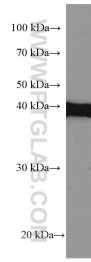
T: 4006900926

E: Proteintech-CN@ptglab.com

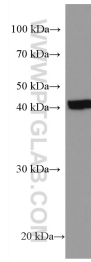
W: ptgcn.com

This product is exclusively available under Proteintech Group brand and is not available to purchase from any other manufacturer.

Selected Validation Data



TF-1 cells were subjected to SDS PAGE followed by western blot with 67593-1-Ig (Mitoferrin 1 antibody) at dilution of 1:3000 incubated at room temperature for 1.5 hours.



human placenta tissue were subjected to SDS PAGE followed by western blot with 67593-1-Ig (Mitoferrin 1 antibody) at dilution of 1:3000 incubated at room temperature for 1.5 hours.