

For Research Use Only

UBAP2L Monoclonal antibody, PBS Only (Capture)

Catalog Number: 67588-2-PBS



Basic Information

Catalog Number: 67588-2-PBS	GenBank Accession Number: BC003170	Purification Method: Protein G Magarose purification
Source: Mouse	GeneID (NCBI): 9898	CloneNo.: 1G11E2
Isotype: IgG1	UNIPROT ID: Q14157	
Immunogen Catalog Number: AG30125	Full Name: ubiquitin associated protein 2-like	
	Calculated MW: 115 kDa	

Applications

Tested Applications:
Cytometric bead array, Indirect ELISA

Species Specificity:
human

Background Information

Storage

Storage:
Store at -80°C.
The product is shipped with ice packs. Upon receipt, store it immediately at -80°C

Storage Buffer:
PBS only, pH7.3

For technical support and original validation data for this product please contact:

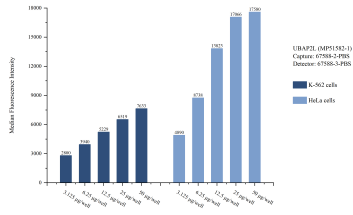
T: 4006900926

E: Proteintech-CN@ptglab.com

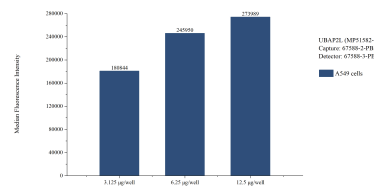
W: ptgcn.com

This product is exclusively available under Proteintech Group brand and is not available to purchase from any other manufacturer.

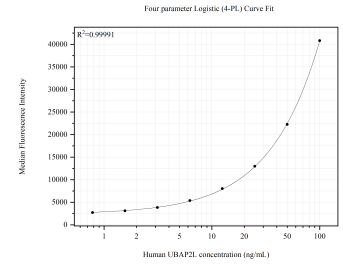
Selected Validation Data



Cytometric bead array sample test of MP51582-1, UBAP2L Monoclonal Matched Antibody Pair, PBS Only. Capture antibody: 67588-2-PBS. Detection antibody: 67588-3-PBS.



Cytometric bead array sample test of MP51582-1, UBAP2L Monoclonal Matched Antibody Pair, PBS Only. Capture antibody: 67588-2-PBS. Detection antibody: 67588-3-PBS.



Cytometric bead array standard curve of MP51582-1, UBAP2L Monoclonal Matched Antibody Pair, PBS Only. Capture antibody: 67588-2-PBS. Detection antibody: 67588-3-PBS. Standard: Ag30125. Range: 0.781-100 ng/mL.