

UBAP2L Monoclonal antibody

Catalog Number: 67588-1-Ig

Basic Information

Catalog Number:

67588-1-Ig

Concentration:

1000 ug/ml

Source:

Mouse

Isotype:

IgG2b

Immunogen Catalog Number:

AG30125

GenBank Accession Number:

BC003170

GeneID (NCBI):

9898

UNIPROT ID:

Q14157

Full Name:

ubiquitin associated protein 2-like

Calculated MW:

115 kDa

Observed MW:

140-160 kDa

Purification Method:

Protein A purification

CloneNo.:

1E3D1

Recommended Dilutions:

WB 1:1000-1:6000

Applications

Tested Applications:

WB, ELISA

Species Specificity:

human

Positive Controls:

WB : HEK-293 cells, K-562 cells, LNCaP cells

Background Information

Ubiquitin-associated protein 2-like (UBAP2L) is a highly conserved protein with an N-terminal ubiquitin-associated (UBA) domain involved in the ubiquitin-proteasome system and aggregate formation induced by proteasome inhibitors. It was originally identified as a human sperm protein that interacts with zona pellucida 3 in human eggs. It can interact with BIM1 to form a complex that modulates hematopoietic stem cell activity. Recent studies have confirmed that UBAP2L function as an oncogene and is associated with various types of cancer, including prostate cancer, glioma, hepatocellular carcinoma (HCC), and colorectal carcinoma. (PMID: 31114027, PMID: 29196913)

Storage

Storage:

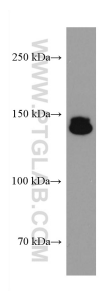
Store at -20°C. Stable for one year after shipment.

Storage Buffer:

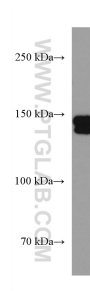
PBS with 0.02% sodium azide and 50% glycerol, pH7.3

Aliquoting is unnecessary for -20°C storage

Selected Validation Data



K-562 cells were subjected to SDS PAGE followed by western blot with 67588-1-Ig (UBAP2L antibody) at dilution of 1:1700 incubated at room temperature for 1.5 hours.



HEK-293 cells were subjected to SDS PAGE followed by western blot with 67588-1-Ig (UBAP2L antibody) at dilution of 1:1700 incubated at room temperature for 1.5 hours.