

# ETV6 Monoclonal antibody

Catalog Number: 67579-1-Ig

## Basic Information

## Catalog Number:

67579-1-Ig

## Size:

1000 µg/ml

## Source:

Mouse

## Isotype:

IgG1

## Immunogen Catalog Number:

AG30054

## GenBank Accession Number:

BC043399

## GeneID (NCBI):

2120

## UNIPROT ID:

P41212

## Full Name:

ets variant 6

## Calculated MW:

452 aa, 53 kDa

## Observed MW:

60 kDa

## Purification Method:

Protein G purification

## CloneNo.:

2A5A2

## Recommended Dilutions:

WB 1:1000-1:6000

IHC 1:50-1:500

## Applications

## Tested Applications:

IHC, WB, ELISA

## Species Specificity:

Human

**Note-IHC: suggested antigen retrieval with TE buffer pH 9.0; (\*) Alternatively, antigen retrieval may be performed with citrate buffer pH 6.0**

## Positive Controls:

**WB** : Jurkat cells, U2OS cells, A431 cells, K-562 cells, THP-1 cells

**IHC** : human breast cancer tissue, human lung cancer tissue

## Background Information

ETV6 (ETS Variant Transcription Factor 6), also known as TEL, is a Protein Coding gene. ETV6 is a member of the ETS family of transcription factors encoded by the ETS variant 6 gene (ETV6), located on chromosome 12p13.2. ETV6 protein contains 3 domains: a) the pointed N-terminal (i.e. PNT) domain which forms oligomer partners with itself as well as other transcription factors (e.g. FLI1) and is required for ETV6's transcriptional repressing activity; b) the central regulatory domain; and c) the C-terminal DNA-binding domain (PMID: 22578774). ETV6 is highly expressed in early hematopoietic progenitor cells (HPCs) and is essential for hematopoiesis in the bone marrow (PMID: 31248877).

## Storage

## Storage:

Store at -20°C.

## Storage Buffer:

PBS with 0.1% sodium azide and 50% glycerol pH 7.3.

Aliquoting is unnecessary for -20°C storage

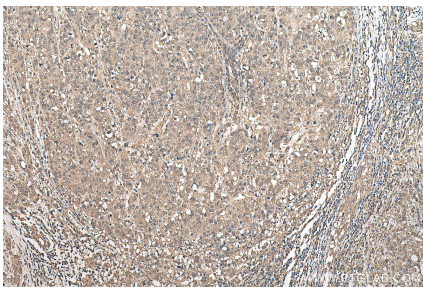
For technical support and original validation data for this product please contact:

T: 4006900926

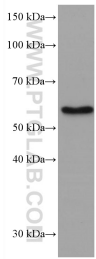
E: [Proteintech-CN@ptglab.com](mailto:Proteintech-CN@ptglab.com)W: [ptgcn.com](http://ptgcn.com)

**This product is exclusively available under Proteintech Group brand and is not available to purchase from any other manufacturer.**

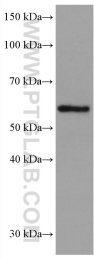
## Selected Validation Data



Immunohistochemical analysis of paraffin-embedded human breast cancer tissue slide using 67579-1-Ig (ETV6 antibody) at dilution of 1:100 (under 10x lens). Heat mediated antigen retrieval with Tris-EDTA buffer (pH 9.0).



Jurkat cells were subjected to SDS PAGE followed by western blot with 67579-1-Ig (ETV6 antibody) at dilution of 1:3000 incubated at room temperature for 1.5 hours.



K-562 cells were subjected to SDS PAGE followed by western blot with 67579-1-Ig (ETV6 antibody) at dilution of 1:3000 incubated at room temperature for 1.5 hours.