

For Research Use Only

# STAT4 Monoclonal antibody, PBS Only

Catalog Number: 67568-2-PBS



## Basic Information

Catalog Number: 67568-2-PBS	GenBank Accession Number: BC031212	Purification Method: Protein G purification
Size: 1mg/ml	GeneID (NCBI): 6775	CloneNo.: 4A8C9
Source: Mouse	UNIPROT ID: Q14765	
Isotype: IgG1	Full Name: signal transducer and activator of transcription 4	
Immunogen Catalog Number: AG19545	Calculated MW: 748 aa, 86 kDa	
	Observed MW: 86 kDa	

## Applications

**Tested Applications:**  
Indirect ELISA, IF/ICC, IHC, WB

**Species Specificity:**  
human, mouse, rat

## Background Information

The JAK/STAT pathway is an extensive signaling pathway downstream of cytokine receptors. STATs are cytosolic proteins with a common structure consisting of an N-terminal oligomerization domain, which favors formation of STAT dimers, followed by a DNA-binding domain and a C-terminal SRC homology-2 (SH2) domain, which is involved in association between STATs and receptors [PMID:22383755]. Signal Transducer and Activator of Transcription 4 (STAT4) is a transcription factor that is activated by IL-12 signaling and promotes Th1-cell differentiation and IFN- $\gamma$  production [PMID:21998209].

## Storage

**Storage:**  
Store at -80°C.  
**The product is shipped with ice packs. Upon receipt, store it immediately at -80°C**

**Storage Buffer:**  
PBS Only

For technical support and original validation data for this product please contact:

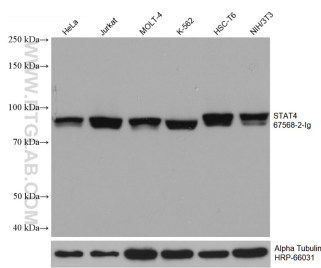
T: 4006900926

E: [Proteintech-CN@ptglab.com](mailto:Proteintech-CN@ptglab.com)

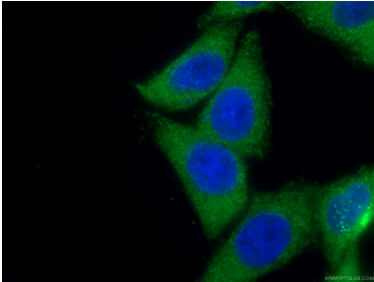
W: [ptgcn.com](http://ptgcn.com)

**This product is exclusively available under Proteintech Group brand and is not available to purchase from any other manufacturer.**

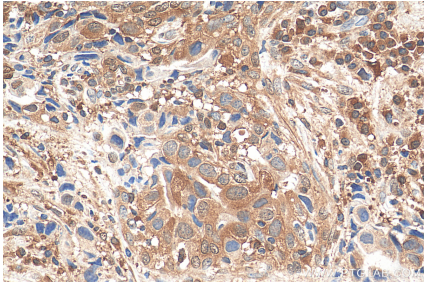
Selected Validation Data



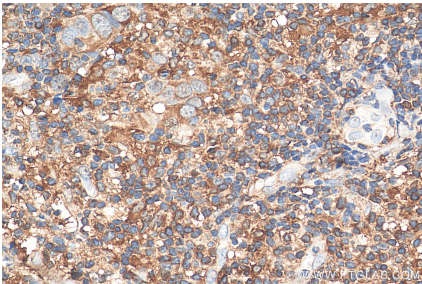
Various lysates were subjected to SDS PAGE followed by western blot with 67568-2-Ig (STAT4 antibody) at dilution of 1:10000 incubated at room temperature for 1.5 hours. The membrane was stripped and reblotted with HRP-conjugated Alpha Tubulin Monoclonal antibody (HRP-66031) as loading control. This data was developed using the same antibody clone with 67568-2-PBS in a different storage buffer formulation.



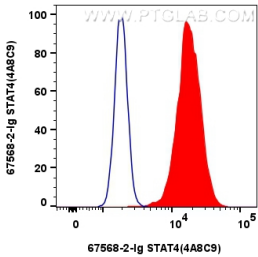
Immunofluorescent analysis of (4% PFA) fixed HepG2 cells using 67568-2-Ig (STAT4 antibody), at dilution of 1:200 and CoraLite®488-Conjugated AffiniPure Goat Anti-Mouse IgG(H+L). This data was developed using the same antibody clone with 67568-2-PBS in a different storage buffer formulation.



Immunohistochemical analysis of paraffin-embedded human breast cancer tissue slide using 67568-2-Ig (STAT4 antibody) at dilution of 1:500 (under 40x lens). Heat mediated antigen retrieval with Tris-EDTA buffer (pH 9.0). This data was developed using the same antibody clone with 67568-2-PBS in a different storage buffer formulation.



Immunohistochemical analysis of paraffin-embedded human breast cancer tissue slide using 67568-2-Ig (STAT4 antibody) at dilution of 1:500 (under 40x lens). Heat mediated antigen retrieval with Tris-EDTA buffer (pH 9.0). This data was developed using the same antibody clone with 67568-2-PBS in a different storage buffer formulation.



1x10<sup>6</sup> HepG2 cells were intracellularly stained with 0.4 ug STAT4 Monoclonal antibody (67568-2-Ig, Clone:4A8C9) and CoraLite®488-Conjugated AffiniPure Goat Anti-Mouse IgG(H+L) (SA00013-1)(red), or 0.4 ug Mouse IgG1 Isotype Control (MOPC-21) (65124-1-Ig, Clone: MOPC-21) (blue). Cells were fixed and permeabilized with Transcription Factor Staining Buffer Kit (PF00011). This data was developed using the same antibody clone with 67568-2-PBS in a

