

For Research Use Only

# PICALM Monoclonal antibody

Catalog Number: 67564-1-Ig



## Basic Information

<b>Catalog Number:</b> 67564-1-Ig	<b>GenBank Accession Number:</b> BC064357	<b>Purification Method:</b> Protein G purification
<b>Size:</b> 1100 µg/ml	<b>GeneID (NCBI):</b> 8301	<b>CloneNo.:</b> 1F6G7
<b>Source:</b> Mouse	<b>UNIPROT ID:</b> Q13492	<b>Recommended Dilutions:</b> WB 1:5000-1:50000 IHC 1:50-1:500 IF 1:200-1:800
<b>Isotype:</b> IgG1	<b>Full Name:</b> phosphatidylinositol binding clathrin assembly protein	
<b>Immunogen Catalog Number:</b> AG29512	<b>Calculated MW:</b> 71 kDa	
	<b>Observed MW:</b> 60-70 kDa	

## Applications

**Tested Applications:**  
IF/ICC, IHC, WB, ELISA

**Species Specificity:**  
Human, Mouse, Rat

**Note-IHC: suggested antigen retrieval with TE buffer pH 9.0; (\*) Alternatively, antigen retrieval may be performed with citrate buffer pH 6.0**

**Positive Controls:**

**WB:** HeLa cells, HepG2 cells, Jurkat cells, K-562 cells, HSC-T6 cells, NIH/3T3 cells

**IHC:** human lung cancer tissue,

**IF:** HeLa cells,

## Background Information

PICALM (Phosphatidyl Inositol Clathrin Assembly Lymphoid Myeloid protein) is a ubiquitously expressed protein that plays a role in clathrin-mediated endocytosis. PICALM also affects the internalization and trafficking of SNAREs and modulates macroautophagy. PICALM is a highly validated genetic risk factor for Alzheimer's disease (AD). The long isoform of human PICALM has 22 exons (encoding PICALML), while the short isoform lacks exon 14 (encoding PICALMS). (PMID: 33397371, PMID: 26075887, PMID: 26005850)

## Storage

**Storage:**  
Store at -20°C. Stable for one year after shipment.  
**Storage Buffer:**  
PBS with 0.02% sodium azide and 50% glycerol pH 7.3.  
Aliquoting is unnecessary for -20°C storage

For technical support and original validation data for this product please contact:

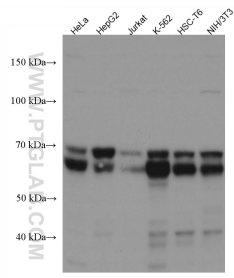
T: 4006900926

E: [Proteintech-CN@ptglab.com](mailto:Proteintech-CN@ptglab.com)

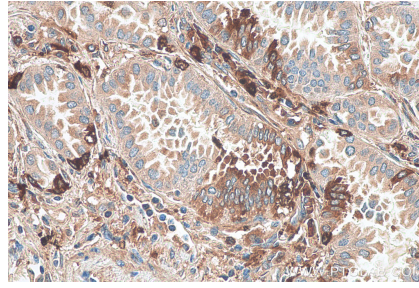
W: [ptgcn.com](http://ptgcn.com)

**This product is exclusively available under Proteintech Group brand and is not available to purchase from any other manufacturer.**

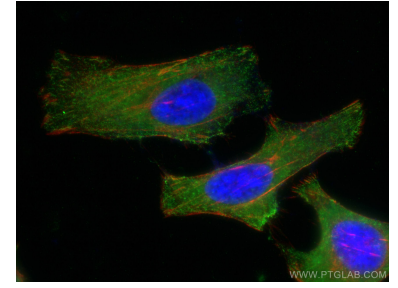
## Selected Validation Data



Various lysates were subjected to SDS PAGE followed by western blot with 67564-1-Ig (PICALM antibody) at dilution of 1:20000 incubated at room temperature for 1.5 hours.



Immunohistochemical analysis of paraffin-embedded human lung cancer tissue slide using 67564-1-Ig (PICALM antibody) at dilution of 1:200 (under 40x lens). Heat mediated antigen retrieval with Tris-EDTA buffer (pH 9.0).



Immunofluorescent analysis of (-20°C Ethanol) fixed HeLa cells using PICALM antibody (67564-1-Ig, Clone: 1F6G7) at dilution of 1:400 and CoraLite®488-Conjugated AffiniPure Goat Anti-Mouse IgG(H+L), CL594-Phalloidin (red).