

For Research Use Only

PAK6 Monoclonal antibody, PBS Only

Catalog Number: 67562-1-PBS



Basic Information

Catalog Number: 67562-1-PBS	GenBank Accession Number: BC035596	Purification Method: Protein A purification
Size: 1 mg/ml	GeneID (NCBI): 56924	CloneNo.: 3G8C1
Source: Mouse	UNIPROT ID: Q9NQU5	
Isotype: IgG1	Full Name: p21 protein (Cdc42/Rac)-activated kinase 6	
Immunogen Catalog Number: AG27692	Calculated MW: 681 aa, 75 kDa	
	Observed MW: 70-75 kDa	

Applications

Tested Applications:
WB, IF, ELISA

Species Specificity:
Human

Background Information

PAK6(p21-activated kinase 6) is a serine/threonine kinase belonging to the p21-activated kinase (PAK) family. This protein plays a role in the regulation of gene transcription and may protect cells from apoptosis through phosphorylation of BAD. Northern blot analysis revealed that PAK6 is highly expressed in testis and prostate tissues (PMID:11278661).

Storage

Storage:
Store at -80°C.

The product is shipped with ice packs. Upon receipt, store it immediately at -80°C

Storage Buffer:
PBS only

For technical support and original validation data for this product please contact:

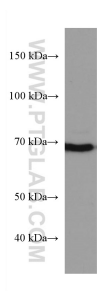
T: 4006900926

E: Proteintech-CN@ptglab.com

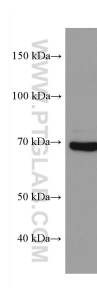
W: ptgcn.com

This product is exclusively available under Proteintech Group brand and is not available to purchase from any other manufacturer.

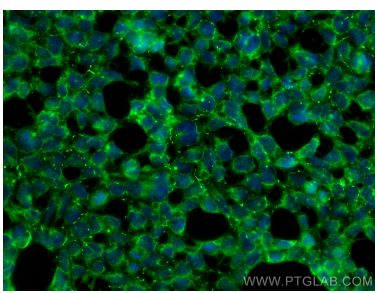
Selected Validation Data



K-562 cells were subjected to SDS PAGE followed by western blot with 67562-1-Ig (PAK6 antibody) at dilution of 1:2000 incubated at room temperature for 1.5 hours. This data was developed using the same antibody clone with 67562-1-PBS in a different storage buffer formulation.



HEK-293 cells were subjected to SDS PAGE followed by western blot with 67562-1-Ig (PAK6 antibody) at dilution of 1:2000 incubated at room temperature for 1.5 hours. This data was developed using the same antibody clone with 67562-1-PBS in a different storage buffer formulation.



Immunofluorescent analysis of (-20°C Ethanol) fixed HEK-293 cells using PAK6 antibody (67562-1-Ig, Clone: 3G8C1) at dilution of 1:400 and CoraLite®488-Conjugated AffiniPure Goat Anti-Mouse IgG(H+L). This data was developed using the same antibody clone with 67562-1-PBS in a different storage buffer formulation.