

For Research Use Only

MTMR14 Monoclonal antibody

Catalog Number: 67561-1-Ig **2 Publications**



Basic Information

Catalog Number: 67561-1-Ig	GenBank Accession Number: BC050626	Purification Method: Protein A purification
Size: 1800 µg/ml	GeneID (NCBI): 64419	CloneNo.: 1A8B2
Source: Mouse	UNIPROT ID: Q8NCE2	Recommended Dilutions: WB 1:1000-1:6000 IHC 1:500-1:2000 IF 1:200-1:800
Isotype: IgG2b	Full Name: myotubularin related protein 14	
Immunogen Catalog Number: AG6883	Calculated MW: 72 kDa	
	Observed MW: 74 kDa	

Applications

Tested Applications: IF-P, IHC, WB, ELISA	Positive Controls: WB : HeLa cells, HEK-293 cells, K-562 cells, Jurkat cells, HSC-T6 cells, NIH/3T3 cells, RAW 264.7 cells IHC : mouse heart tissue, mouse skeletal muscle tissue IF : mouse heart tissue,
Cited Applications: WB, IF	
Species Specificity: Human, mouse, rat	
Cited Species: human, mouse, rat	

Note-IHC: suggested antigen retrieval with TE buffer pH 9.0; (*) Alternatively, antigen retrieval may be performed with citrate buffer pH 6.0

Background Information

MTMR14, also known as Jumpy, belongs to the MTM1/MTMRs family which has 15 members that divided into two subgroup: catalytically inactive and active. MTMR14 is a catalytically active member possessing an active phosphatase domain, that specifically dephosphorylates PI3P and phosphatidylinositol (3,5)-bisphosphate (PI3,5P2) at position 3 on inositol ring. A remarkable feature of the MTM1/MTMRs family is the association between a catalytically inactive member and a catalytically active member, which plays an important regulatory role. MTMR14 has 3 isoforms with molecular weight of 60-72 kDa, and also can be detected as a higher molecular weight due to the heterodimerization with other MTMR members.

Notable Publications

Author	Pubmed ID	Journal	Application
Ling-Yao Kong	36314496	J Am Heart Assoc	IF
Yiya Gu	35035670	Oxid Med Cell Longev	WB

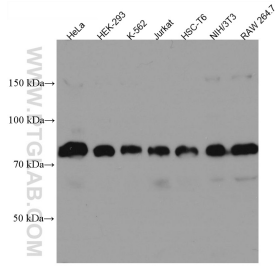
Storage

Storage:
Store at -20°C.
Storage Buffer:
PBS with 0.02% sodium azide and 50% glycerol pH 7.3.
Aliquoting is unnecessary for -20°C storage

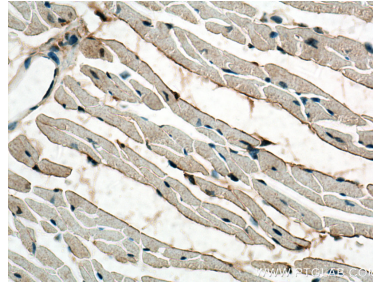
For technical support and original validation data for this product please contact:
T: 4006900926 E: Proteintech-CN@ptglab.com W: ptgcn.com

This product is exclusively available under Proteintech Group brand and is not available to purchase from any other manufacturer.

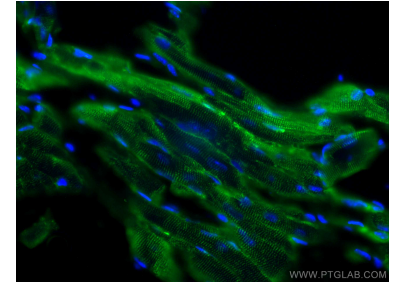
Selected Validation Data



Various lysates were subjected to SDS PAGE followed by western blot with 67561-1-Ig (MTMR14 antibody) at dilution of 1:3000 incubated at room temperature for 1.5 hours.



Immunohistochemical analysis of paraffin-embedded mouse heart tissue slide using 67561-1-Ig (MTMR14 antibody) at dilution of 1:1000 (under 40x lens). Heat mediated antigen retrieval with Tris-EDTA buffer (pH 9.0).



Immunofluorescent analysis of (4% PFA) fixed mouse heart tissue using MTMR14 antibody (67561-1-Ig, Clone: 1A8B2) at dilution of 1:400 and CoraLite®488-Conjugated AffiniPure Goat Anti-Mouse IgG(H+L).