

## CRX Monoclonal antibody

Catalog Number: 67555-1-Ig

## Basic Information

Catalog Number: 67555-1-Ig	GenBank Accession Number: BC016664	Purification Method: Protein G purification
Size: 1000 µg/ml	GeneID (NCBI): 1406	CloneNo.: 1C3C11
Source: Mouse	UNIPROT ID: O43186	Recommended Dilutions: WB 1:1000-1:6000 IHC 1:2000-1:8000
Isotype: IgG1	Full Name: cone-rod homeobox	
Immunogen Catalog Number: AG30086	Calculated MW: 299 aa, 32 kDa Observed MW: 37 kDa	

## Applications

## Tested Applications:

IHC, WB, ELISA

## Species Specificity:

Human, mouse, rat, pig

**Note-IHC: suggested antigen retrieval with TE buffer pH 9.0; (\*) Alternatively, antigen retrieval may be performed with citrate buffer pH 6.0**

## Positive Controls:

WB : rat retina tissue, Y79 cells, mouse retina tissue, pig retina tissue

IHC : mouse eye tissue,

## Background Information

Cone-rod homeobox (Crx) is a homeodomain transcription factor and member of the Otx family, which has been thought to play a critical role in determining and maintaining the phenotype of both pinealocytes and retinal photoreceptors [PMID:17467693]. In the mammalian retina, Crx plays an essential role in the normal development and maintenance of cones and rods and regulates expression of the network of genes that characterize the retina [PMID:17653270]. Elimination of Crx by disruption of the homeobox domain results in loss of the image-forming visual system but not the non-image-forming visual system controlling circadian rhythms [PMID:20438719].

## Storage

## Storage:

Store at -20°C. Stable for one year after shipment.

## Storage Buffer:

PBS with 0.02% sodium azide and 50% glycerol pH 7.3.

Aliquoting is unnecessary for -20°C storage

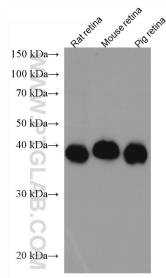
For technical support and original validation data for this product please contact:

T: 4006900926

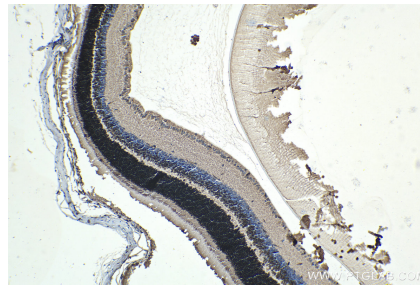
E: [Proteintech-CN@ptglab.com](mailto:Proteintech-CN@ptglab.com)W: [ptgcn.com](http://ptgcn.com)

This product is exclusively available under Proteintech Group brand and is not available to purchase from any other manufacturer.

## Selected Validation Data



Various lysates were subjected to SDS PAGE followed by western blot with 67555-1-Ig (CRX antibody) at dilution of 1:3000 incubated at room temperature for 1.5 hours.



Immunohistochemical analysis of paraffin-embedded mouse eye tissue slide using 67555-1-Ig (CRX antibody) at dilution of 1:4000 (under 10x lens). Heat mediated antigen retrieval with Tris-EDTA buffer (pH 9.0).