

For Research Use Only

RHOC Monoclonal antibody, PBS Only

Catalog Number: 67542-1-PBS



Basic Information

Catalog Number: 67542-1-PBS	GenBank Accession Number: BC007245	Purification Method: Protein A purification
Size: 1mg/ml	GeneID (NCBI): 389	CloneNo.: 1G1C1
Source: Mouse	UNIPROT ID: P08134	
Isotype: IgG1	Full Name: ras homolog gene family, member C	
Immunogen Catalog Number: AG14633	Calculated MW: 22 kDa	
	Observed MW: 22 kDa	

Applications

Tested Applications:
WB, IHC, IF/ICC, FC (Intra), Indirect ELISA

Species Specificity:
human, mouse, rat

Background Information

Ras homolog family member C (RHOC) encodes a Rho-related GTP-binding protein, which belongs to small GTPase superfamily and also Rho family. RHOC. Regulates a signal transduction pathway linking plasma membrane receptors to the assembly of focal adhesions and actin stress fibers. Expression of RHOC contributes to metastatic phenotype of melanoma cells and is associated with multiple cancers including gastric carcinomas, ovarian carcinomas and breast cancer as well.

Storage

Storage:
Store at -80°C.
The product is shipped with ice packs. Upon receipt, store it immediately at -80°C

Storage Buffer:
PBS Only

For technical support and original validation data for this product please contact:

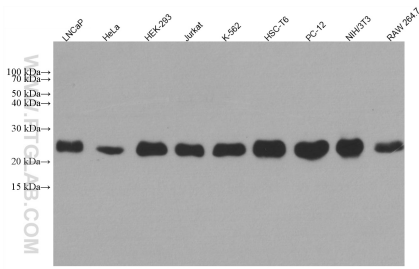
T: 4006900926

E: Proteintech-CN@ptglab.com

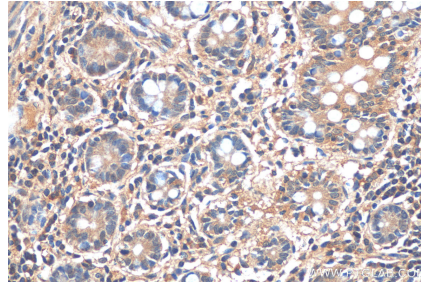
W: ptgcn.com

This product is exclusively available under Proteintech Group brand and is not available to purchase from any other manufacturer.

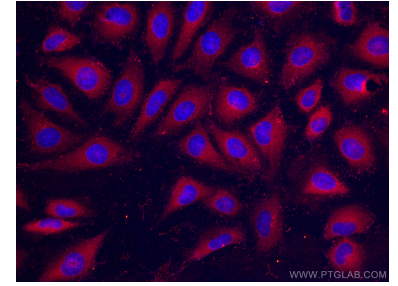
Selected Validation Data



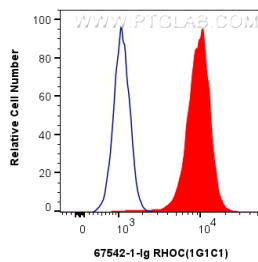
Various lysates were subjected to SDS PAGE followed by western blot with 67542-1-Ig (RHOc antibody) at dilution of 1:20000 incubated at room temperature for 1.5 hours. This data was developed using the same antibody clone with 67542-1-PBS in a different storage buffer formulation.



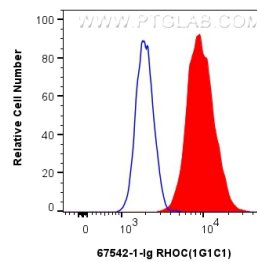
Immunohistochemical analysis of paraffin-embedded human small intestine tissue slide using 67542-1-Ig (RHOc antibody) at dilution of 1:800 (under 40x lens). This data was developed using the same antibody clone with 67542-1-PBS in a different storage buffer formulation.



Immunofluorescent analysis of (4% PFA) fixed HeLa cells using RHOc antibody (67542-1-Ig, Clone: 1G1C1) at dilution of 1:400 and CoraLite®488-Conjugated AffiniPure Goat Anti-Mouse IgG(H+L). This data was developed using the same antibody clone with 67542-1-PBS in a different storage buffer formulation.



1x10⁶ Jurkat cells were intracellularly stained with 0.4 ug RHOc Monoclonal antibody (67542-1-Ig, Clone:1G1C1) and CoraLite®488-Conjugated Goat Anti-Mouse IgG(H+L) (SA00013-1)(red), or 0.4 ug Mouse IgG1 isotype control Mouse McAb (66360-1-Ig, Clone: 1F8D3) (blue). Cells were fixed with 4% PFA and permeabilized with Flow Cytometry Perm Buffer (PF00011-C). This data was developed using the same antibody clone with 67542-1-PBS in a different storage buffer



1x10⁶ HepG2 cells were intracellularly stained with 0.4 ug RHOc Monoclonal antibody (67542-1-Ig, Clone:1G1C1) and CoraLite®488-Conjugated Goat Anti-Mouse IgG(H+L) (SA00013-1)(red), or 0.4 ug Mouse IgG1 isotype control Mouse McAb (66360-1-Ig, Clone: 1F8D3) (blue). Cells were fixed with 4% PFA and permeabilized with Flow Cytometry Perm Buffer (PF00011-C). This data was developed using the same antibody clone with 67542-1-PBS in a different storage buffer