

For Research Use Only

RBM8A,Y14 Monoclonal antibody, PBS Only

Catalog Number: 67541-1-PBS

Featured Product



Basic Information

Catalog Number:

67541-1-PBS

Size:

1mg/ml

Source:

Mouse

Isotype:

IgG1

Immunogen Catalog Number:

AG6800

GenBank Accession Number:

BC017088

GeneID (NCBI):

9939

UNIPROT ID:

Q9Y5S9

Full Name:

RNA binding motif protein 8A

Calculated MW:

20 kDa

Observed MW:

24 kDa

Purification Method:

Protein G purification

CloneNo.:

1F5G1

Applications

Tested Applications:

WB, IHC, IF/ICC, Indirect ELISA

Species Specificity:

human, mouse, rat

Background Information

Storage

Storage:

Store at -80°C.

The product is shipped with ice packs. Upon receipt, store it immediately at -80°C

Storage Buffer:

PBS Only

For technical support and original validation data for this product please contact:

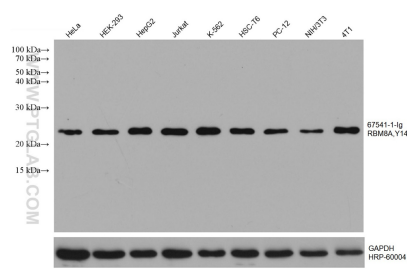
T: 4006900926

E: Proteintech-CN@ptglab.com

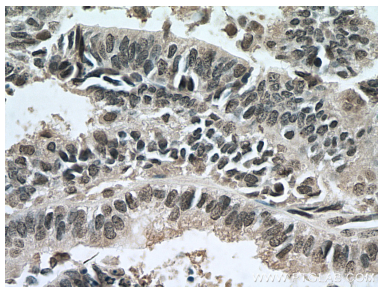
W: ptgcn.com

This product is exclusively available under Proteintech Group brand and is not available to purchase from any other manufacturer.

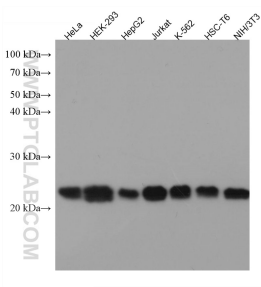
Selected Validation Data



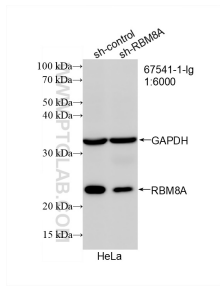
Various lysates were subjected to SDS PAGE followed by western blot with 67541-1-Ig (RBM8A, Y14 antibody) at dilution of 1:20000 incubated at room temperature for 1.5 hours. The membrane was stripped and reblotted with HRP-conjugated GAPDH Monoclonal antibody (HRP-60004) as loading control. This data was developed using the same antibody clone with 67541-1-PBS in a different storage buffer formulation.



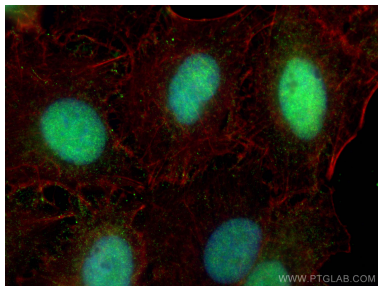
Immunohistochemical analysis of paraffin-embedded human ovary tumor tissue slide using 67541-1-Ig (RBM8A, Y14 antibody) at dilution of 1:1000 (under 40x lens). Heat mediated antigen retrieval with Tris-EDTA buffer (pH 9.0). This data was developed using the same antibody clone with 67541-1-PBS in a different storage buffer formulation.



Various lysates were subjected to SDS PAGE followed by western blot with 67541-1-Ig (RBM8A, Y14 antibody) at dilution of 1:10000 incubated at room temperature for 1.5 hours. This data was developed using the same antibody clone with 67541-1-PBS in a different storage buffer formulation.



WB result of RBM8A, Y14 antibody (67541-1-Ig; 1:6000; incubated at room temperature for 1.5 hours) with sh-Control and sh-RBM8A, Y14 transfected HeLa cells. This data was developed using the same antibody clone with 67541-1-PBS in a different storage buffer formulation.



Immunofluorescent analysis of (4% PFA) fixed A549 cells using RBM8A, Y14 antibody (67541-1-Ig, Clone: 1F5G1) at dilution of 1:2000 and CoraLite® 488-Conjugated AffiniPure Goat Anti-Mouse IgG(H+L) (SA00013-1), CL594-phalloidin (red). This data was developed using the same antibody clone with 67541-1-PBS in a different storage buffer formulation.