

For Research Use Only

TCP1 eta Monoclonal antibody

Catalog Number: 67540-1-Ig

Featured Product

1 Publications



Basic Information

Catalog Number:

67540-1-Ig

Concentration:

1000 ug/ml

Source:

Mouse

Isotype:

IgG1

Immunogen Catalog Number:

AG9502

GenBank Accession Number:

BC019296

GeneID (NCBI):

10574

UNIPROT ID:

Q99832

Full Name:

chaperonin containing TCP1, subunit 7 (eta)

Calculated MW:

543 aa, 59 kDa

Observed MW:

59 kDa

Purification Method:

Protein A purification

CloneNo.:

2C1G1

Recommended Dilutions:

WB 1:5000-1:50000

IHC 1:50-1:500

IF/ICC 1:200-1:800

Applications

Tested Applications:

WB, IHC, IF/ICC, ELISA

Cited Applications:

WB

Species Specificity:

human, mouse

Cited Species:

human

Note-IHC: suggested antigen retrieval with TE buffer pH 9.0; (*) Alternatively, antigen retrieval may be performed with citrate buffer pH 6.0

Positive Controls:

WB : A549 cells, NIH/3T3 cells, HEK-293 cells, LNCaP cells, Hela cells, HepG cells, Jurkat cells, K-562 cells

IHC : mouse kidney tissue, mouse liver tissue

IF/ICC : U2OS cells,

Background Information

CCT7 is a subunit of CCT complex-a large cytosolic chaperonin complex composed of two hetero-oligomeric stacked rings able to interact with nascent polypeptides, which mediates protein folding in an ATP-dependent manner and prevents aggregation in eukaryotes. Each ring consists of eight different subunits (CCT1 to CCT8). CCT7 is involved in preventing aggregation of GPCRs and in regulating their expression, maturation, and transport to the cell surface.

Notable Publications

Author	Pubmed ID	Journal	Application
Yuichi Yagita	37480851	Cell	WB

Storage

Storage:

Store at -20°C. Stable for one year after shipment.

Storage Buffer:

PBS with 0.02% sodium azide and 50% glycerol pH 7.3.

Aliquoting is unnecessary for -20°C storage

For technical support and original validation data for this product please contact:

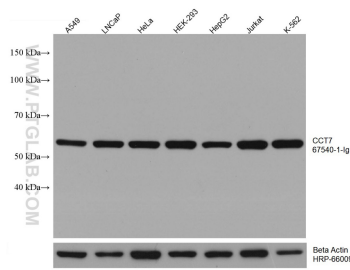
T: 4006900926

E: Proteintech-CN@ptglab.com

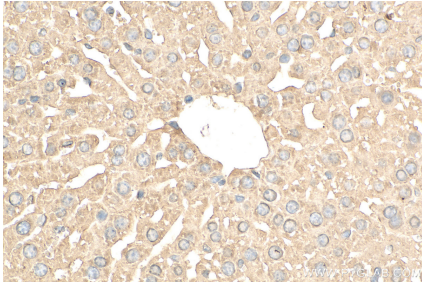
W: ptgcn.com

This product is exclusively available under Proteintech Group brand and is not available to purchase from any other manufacturer.

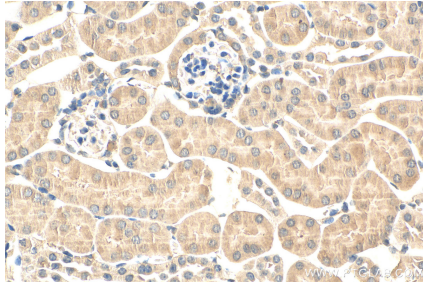
Selected Validation Data



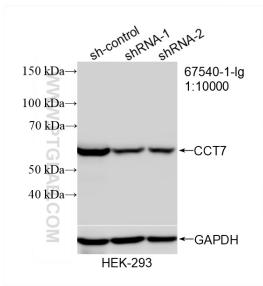
Various lysates were subjected to SDS PAGE followed by western blot with 67540-1-Ig (CCT7 antibody) at dilution of 1:20000 incubated at room temperature for 1.5 hours. The membrane was stripped and reblotted with HRP-conjugated Beta Actin Monoclonal antibody (HRP-66009) as loading control.



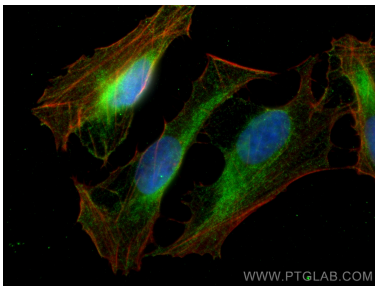
Immunohistochemical analysis of paraffin-embedded mouse liver tissue slide using 67540-1-Ig (TCP1 eta antibody) at dilution of 1:200 (under 40x lens). Heat mediated antigen retrieval with Tris-EDTA buffer (pH 9.0).



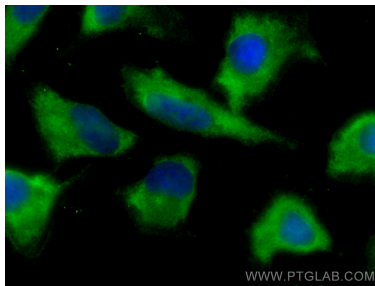
Immunohistochemical analysis of paraffin-embedded mouse kidney tissue slide using 67540-1-Ig (TCP1 eta antibody) at dilution of 1:200 (under 40x lens). Heat mediated antigen retrieval with Tris-EDTA buffer (pH 9.0).



WB result of CCT7 antibody (67540-1-Ig; 1:10000; incubated at room temperature for 1.5 hours) with sh-Control and sh-CCT7 transfected HEK-293 cells.



Immunofluorescent analysis of (4% PFA) fixed U2OS cells using CCT7 antibody (67540-1-Ig, Clone: 2C1G1) at dilution of 1:400 and CoraLite®488-Conjugated AffiniPure Goat Anti-Mouse IgG(H+L), CL594-Phalloidin (red).



Immunofluorescent analysis of (-20°C Methanol) fixed U2OS cells using CCT7 antibody (67540-1-Ig, Clone: 2C1G1) at dilution of 1:400 and CoraLite®488-Conjugated AffiniPure Goat Anti-Mouse IgG(H+L).