

For Research Use Only

human IgD Monoclonal antibody

Catalog Number: 67538-1-Ig **1 Publications**



Basic Information

Catalog Number: 67538-1-Ig	GenBank Accession Number: BC021276	Purification Method: Protein A purification
Size: 1700 ug/ml	GeneID (NCBI): 3495	CloneNo.: 1D1B12
Source: Mouse	Full Name: immunoglobulin heavy constant delta	Recommended Dilutions: WB 1:5000-1:50000 IHC 1:10000-1:40000 IF-P 1:200-1:800
Isotype: IgG2a	Calculated MW: 573 aa, 63 kDa	
Immunogen Catalog Number: AG9614	Observed MW: 55-70 kDa	

Applications

Tested Applications: WB, IHC, IF-P, ELISA	Positive Controls:
Cited Applications: IF	WB : human plasma,
Species Specificity: human	IHC : human tonsillitis tissue,
Cited Species: human	IF-P : human tonsillitis tissue,
Note-IHC: suggested antigen retrieval with TE buffer pH 9.0; (*) Alternatively, antigen retrieval may be performed with citrate buffer pH 6.0	

Background Information

IgD is the major antigen receptor isotype on the surface of most peripheral B-cells. The function of IgD is to signal the B cells to be activated. The relative molecular mass and half-life of secreted IgD is 185 kDa and 2.8 days, respectively. Secreted IgD is produced as a monomeric antibody with two heavy chains of the delta (δ) class, and two Ig light chains. This antibody detects the heavy chain (55-70 kDa) of IgD and secreted IgD (185 kDa) .

Notable Publications

Author	Pubmed ID	Journal	Application
Jianfei Zhu	36434043	Exp Mol Med	IF

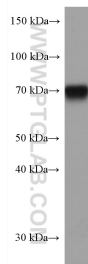
Storage

Storage:
Store at -20°C. Stable for one year after shipment.
Storage Buffer:
PBS with 0.02% sodium azide and 50% glycerol pH 7.3.
Aliquoting is unnecessary for -20°C storage

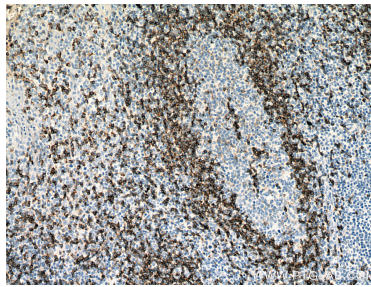
For technical support and original validation data for this product please contact:
T: 4006900926 E: Proteintech-CN@ptglab.com W: ptgcn.com

This product is exclusively available under Proteintech Group brand and is not available to purchase from any other manufacturer.

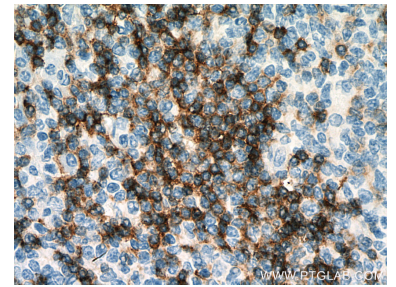
Selected Validation Data



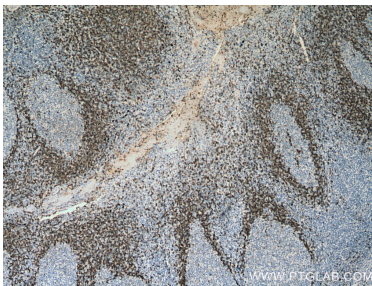
human plasma (0.1 ul) were subjected to SDS PAGE followed by western blot with 67538-1-Ig (human IgD antibody) at dilution of 1:20000 incubated at room temperature for 1.5 hours.



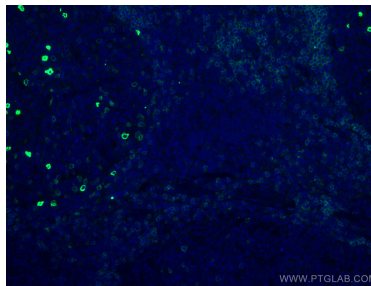
Immunohistochemical analysis of paraffin-embedded human tonsillitis tissue slide using 67538-1-Ig (human IgD antibody) at dilution of 1:20000 (under 10x lens). Heat mediated antigen retrieval with Tris-EDTA buffer (pH 9.0).



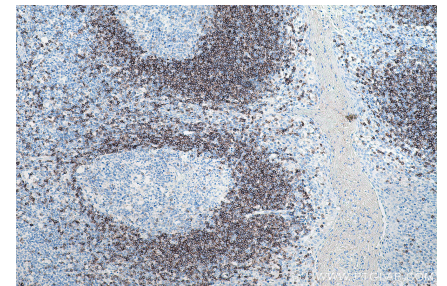
Immunohistochemical analysis of paraffin-embedded human tonsillitis tissue slide using 67538-1-Ig (human IgD antibody) at dilution of 1:20000 (under 40x lens). Heat mediated antigen retrieval with Tris-EDTA buffer (pH 9.0).



Immunohistochemical analysis of paraffin-embedded human tonsillitis tissue slide using 67538-1-Ig (human IgD antibody) at dilution of 1:20000 (under 4x lens). Heat mediated antigen retrieval with Tris-EDTA buffer (pH 9.0).



Immunofluorescent analysis of (4% PFA) fixed human tonsillitis tissue using IgHD antibody (67538-1-Ig, Clone: 1D1B12) at dilution of 1:400 and CoraLite® 488-Conjugated AffiniPure Goat Anti-Mouse IgG(H+L).



Immunohistochemical analysis of paraffin-embedded human tonsillitis tissue slide using 67538-1-Ig (human IgD antibody) at dilution of 1:40000 (under 10x lens). Heat mediated antigen retrieval with Tris-EDTA buffer (pH 9.0).