

For Research Use Only

Tim23 Monoclonal antibody

Catalog Number: 67535-1-Ig **5 Publications**



Basic Information

Catalog Number:

67535-1-Ig

Size:

1000 µg/ml

Source:

Mouse

Isotype:

IgG1

Immunogen Catalog Number:

AG27069

GenBank Accession Number:

BC062707

GeneID (NCBI):

10431

UNIPROT ID:

O14925

Full Name:

translocase of inner mitochondrial membrane 23 homolog (yeast)

Calculated MW:

22 kDa

Observed MW:

22 kDa

Purification Method:

Protein G purification

CloneNo.:

3H10F5

Recommended Dilutions:

WB 1:2000-1:10000

IHC 1:50-1:500

IF 1:200-1:800

Applications

Tested Applications:

IF/ICC, IHC, WB, ELISA

Cited Applications:

IF, WB

Species Specificity:

Human, Mouse, Rat

Cited Species:

human, mouse

Note-IHC: suggested antigen retrieval with TE buffer pH 9.0; (*) Alternatively, antigen retrieval may be performed with citrate buffer pH 6.0

Positive Controls:

WB: A549 cells, RAW 264.7 cells, HeLa cells, MCF-7 cells, Jurkat cells, K-562 cells, HSC-T6 cells, NIH/3T3 cells

IHC: human liver cancer tissue,

IF: HepG2 cells,

Background Information

Tim23 is a mitochondrial inner membrane protein essential for import of preproteins into the matrix. Tim23 together with Tim17 and Tim44 form the Tim23 complex which mediates the import of nuclear encoded preproteins into the mitochondria. Tim23 is commonly used as loading control for mitochondrial inner membrane protein.

Notable Publications

Author	Pubmed ID	Journal	Application
Yinjuan Song	34720021	Autophagy	WB, IF
Bo Zhang	36588386	Autophagy	WB
Lian-Lian Sun	37575045	Zool Res	WB

Storage

Storage:

Store at -20°C. Stable for one year after shipment.

Storage Buffer:

PBS with 0.02% sodium azide and 50% glycerol pH 7.3.

Aliquoting is unnecessary for -20°C storage

For technical support and original validation data for this product please contact:

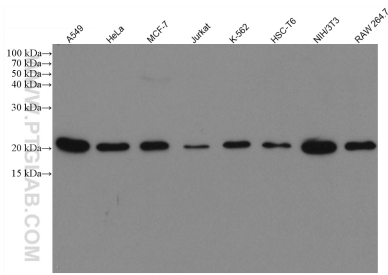
T: 4006900926

E: Proteintech-CN@ptglab.com

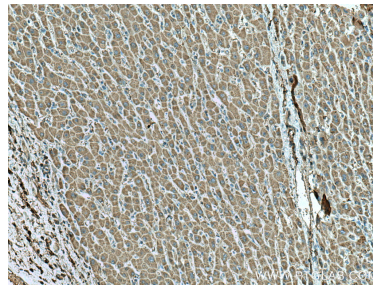
W: ptgcn.com

This product is exclusively available under Proteintech Group brand and is not available to purchase from any other manufacturer.

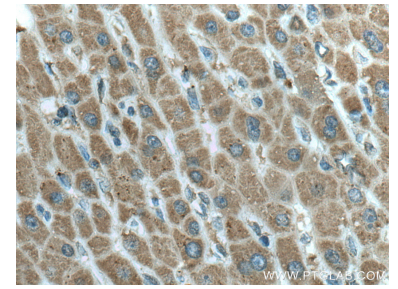
Selected Validation Data



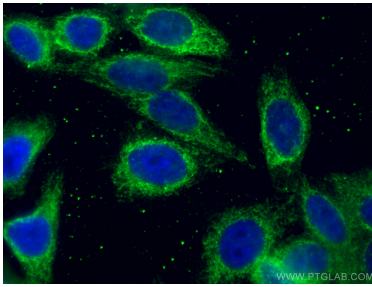
Various lysates were subjected to SDS PAGE followed by western blot with 67535-1-Ig (Tim23 antibody) at dilution of 1:5000 incubated at room temperature for 1.5 hours.



Immunohistochemical analysis of paraffin-embedded human liver cancer tissue slide using 67535-1-Ig (Tim23 antibody) at dilution of 1:200 (under 10x lens). Heat mediated antigen retrieval with Tris-EDTA buffer (pH 9.0).



Immunohistochemical analysis of paraffin-embedded human liver cancer tissue slide using 67535-1-Ig (Tim23 antibody) at dilution of 1:200 (under 40x lens). Heat mediated antigen retrieval with Tris-EDTA buffer (pH 9.0).



Immunofluorescent analysis of (4% PFA) fixed HepG2 cells using Tim23 antibody (67535-1-Ig, Clone: 3H10F5) at dilution of 1:400 and CoraLite®488-Conjugated AffiniPure Goat Anti-Mouse IgG(H+L).