

For Research Use Only

# MYL4 Monoclonal antibody, PBS Only



Catalog Number: 67533-1-PBS

## Basic Information

Catalog Number:

67533-1-PBS

Size:

1mg/ml

Source:

Mouse

Isotype:

IgG2b

Immunogen Catalog Number:

AG19244

GenBank Accession Number:

BC030228

GeneID (NCBI):

4635

UNIPROT ID:

P12829

Full Name:

myosin, light chain 4, alkali; atrial, embryonic

Calculated MW:

197 aa, 22 kDa

Observed MW:

22-25 kDa

Purification Method:

Protein A purification

CloneNo.:

2F5C1

## Applications

Tested Applications:

WB, IHC, IF-P, ELISA

Species Specificity:

Human, mouse, rat, pig

## Background Information

Myosin light - chain 4 (MYL4) encodes an essential myosin light chain that is expressed in embryonic whole heart and skeletal muscle. It is specifically expressed in human atria after birth. MYL4 is essential for atrial electrical, functional, and structural integrity, and MYL4 dysfunction can produce severe inherited atrial cardiomyopathy.

## Storage

Storage:

Store at -80°C.

The product is shipped with ice packs. Upon receipt, store it immediately at -80°C

Storage Buffer:

PBS Only

For technical support and original validation data for this product please contact:

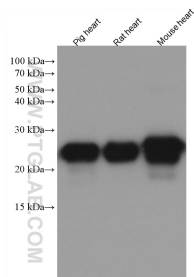
T: 4006900926

E: [Proteintech-CN@ptglab.com](mailto:Proteintech-CN@ptglab.com)

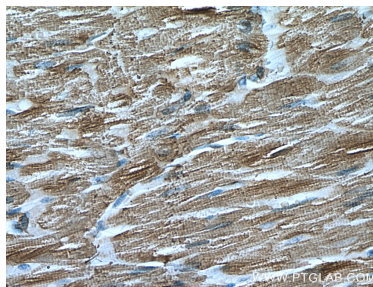
W: [ptgcn.com](http://ptgcn.com)

This product is exclusively available under Proteintech Group brand and is not available to purchase from any other manufacturer.

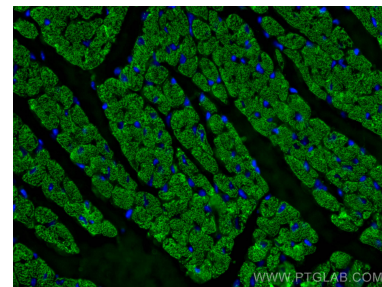
## Selected Validation Data



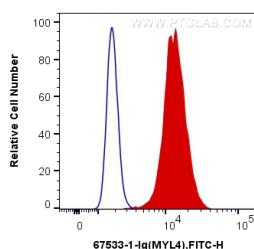
Various lysates were subjected to SDS PAGE followed by western blot with 67533-1-Ig (MYL4 antibody) at dilution of 1:20000 incubated at room temperature for 1.5 hours. This data was developed using the same antibody clone with 67533-1-PBS in a different storage buffer formulation.



Immunohistochemical analysis of paraffin-embedded human heart tissue slide using 67533-1-Ig (MYL4 antibody) at dilution of 1:300 (under 40x lens). Heat mediated antigen retrieval with Tris-EDTA buffer (pH 9.0). This data was developed using the same antibody clone with 67533-1-PBS in a different storage buffer formulation.



Immunofluorescent analysis of (4% PFA) fixed mouse heart tissue using MYL4 antibody (67533-1-Ig, Clone: 2F5C1) at dilution of 1:400 and CoraLite®488-Conjugated AffiniPure Goat Anti-Mouse IgG(H+L). This data was developed using the same antibody clone with 67533-1-PBS in a different storage buffer formulation.



1X10<sup>6</sup> C2C12 cells were intracellularly stained with 0.4 ug Anti-Human MYL4 (67533-1-Ig, Clone:2F5C1) and CoraLite®488-Conjugated AffiniPure Goat Anti-Mouse IgG(H+L) at dilution 1:1000 (red), or 0.4 ug Control Antibody. Cells were fixed with 4% PFA and permeabilized with Flow Cytometry Perm Buffer (PF00011-C). This data was developed using the same antibody clone with 67533-1-PBS in a different storage buffer formulation.