

# GPT/ALT1 Monoclonal antibody, PBS Only

Catalog Number: 67531-1-PBS

## Basic Information

<b>Catalog Number:</b> 67531-1-PBS	<b>GenBank Accession Number:</b> BC018207	<b>Purification Method:</b> Protein A purification
<b>Size:</b> 1 mg/ml	<b>GeneID (NCBI):</b> 2875	<b>CloneNo.:</b> 5F6B5
<b>Source:</b> Mouse	<b>UNIPROT ID:</b> P24298	
<b>Isotype:</b> IgG1	<b>Full Name:</b> glutamic-pyruvate transaminase (alanine aminotransferase)	
<b>Immunogen Catalog Number:</b> AG10453	<b>Calculated MW:</b> 496 aa, 55 kDa	
	<b>Observed MW:</b> 52 kDa	

## Applications

**Tested Applications:**  
WB, Indirect ELISA, IF

**Species Specificity:**  
Human, Pig, rat, mouse

## Background Information

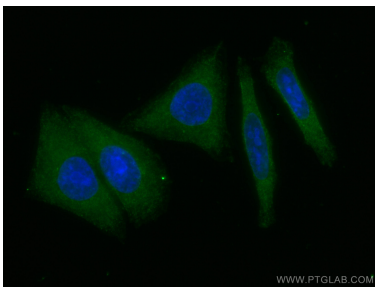
GPT, also known as ALT1 (glutamate-pyruvate transaminase 1), catalyzes the reversible transamination between alanine and 2-oxoglutarate to generate pyruvate and glutamate and, therefore, plays a key role in the intermediary metabolism of glucose and amino acids. Serum activity levels of this enzyme are routinely used as a biomarker of liver injury caused by drug toxicity, infection, alcohol, and steatosis. A related gene on chromosome 16 encodes a putative mitochondrial alanine aminotransaminase.

## Storage

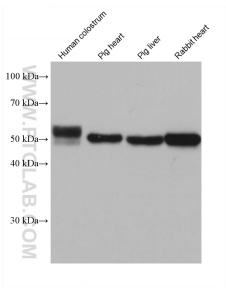
**Storage:**  
Store at -80°C.  
**The product is shipped with ice packs. Upon receipt, store it immediately at -80°C**

**Storage Buffer:**  
PBS Only

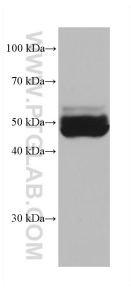
## Selected Validation Data



Immunofluorescent analysis of (-20°C Ethanol) fixed HepG2 cells using GPT antibody (67531-1-Ig, Clone: 5F6B5 ) at dilution of 1:400 and CoraLite®488-Conjugated AffiniPure Goat Anti-Mouse IgG(H+L). This data was developed using the same antibody clone with 67531-1-PBS in a different storage buffer formulation.



Various lysates were subjected to SDS PAGE followed by western blot with 67531-1-Ig (GPT/ALT1 antibody) at dilution of 1:10000 incubated at room temperature for 1.5 hours. This data was developed using the same antibody clone with 67531-1-PBS in a different storage buffer formulation.



mouse liver tissue were subjected to SDS PAGE followed by western blot with 67531-1-Ig (GPT/ALT1 antibody) at dilution of 1:10000 incubated at room temperature for 1.5 hours. This data was developed using the same antibody clone with 67531-1-PBS in a different storage buffer formulation.