

For Research Use Only

# SLC2A9 Monoclonal antibody

Catalog Number: 67530-1-Ig **10 Publications**



## Basic Information

Catalog Number:

67530-1-Ig

Concentration:

1500 ug/ml

Source:

Mouse

Isotype:

IgG1

Immunogen Catalog Number:

AG24135

GenBank Accession Number:

BC018897

GeneID (NCBI):

56606

UNIPROT ID:

Q9NRM0

Full Name:

solute carrier family 2 (facilitated glucose transporter), member 9

Calculated MW:

540 aa, 59 kDa

Observed MW:

56-59 kDa

Purification Method:

Protein G purification

CloneNo.:

2D6E1

Recommended Dilutions:

WB 1:5000-1:50000

IHC 1:500-1:2000

IF-P 1:200-1:800

## Applications

Tested Applications:

WB, IHC, IF-P, ELISA

Cited Applications:

WB, IHC, IF

Species Specificity:

human, mouse, rat, pig, rabbit

Cited Species:

human, mouse, rat

**Note-IHC: suggested antigen retrieval with TE buffer pH 9.0; (\*) Alternatively, antigen retrieval may be performed with citrate buffer pH 6.0**

Positive Controls:

**WB** : SMMC-7721 cells, pig liver tissue, HepG2 cells, L02 cells, HuH-7 cells, rat liver tissue, mouse liver tissue, rabbit liver tissue, HSC-T6 cells

**IHC** : human liver tissue, human hepatocirrhosis tissue

**IF-P** : human hepatocirrhosis tissue, human kidney tissue

## Background Information

### Notable Publications

Author	Pubmed ID	Journal	Application
Yan Huang	36387593	Curr Res Food Sci	WB
Wen-Hao Xu	31910301	J Pharm Pharmacol	WB
Lin-Zi Li	36644440	Evid Based Complement Alternat Med	IHC

## Storage

Storage:

Store at -20°C. Stable for one year after shipment.

Storage Buffer:

PBS with 0.02% sodium azide and 50% glycerol, pH7.3

Aliquoting is unnecessary for -20°C storage

For technical support and original validation data for this product please contact:

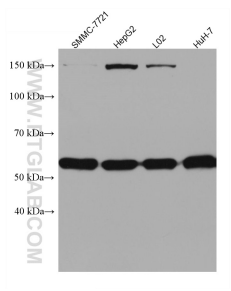
T: 4006900926

E: [Proteintech-CN@ptglab.com](mailto:Proteintech-CN@ptglab.com)

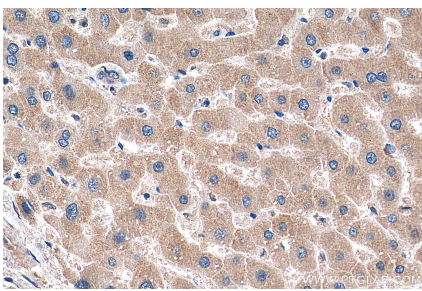
W: [ptgcn.com](http://ptgcn.com)

**This product is exclusively available under Proteintech Group brand and is not available to purchase from any other manufacturer.**

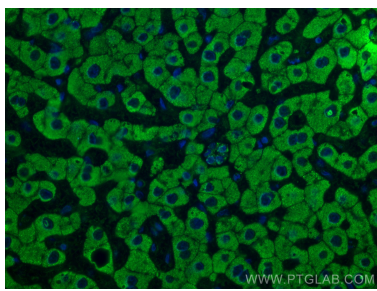
Selected Validation Data



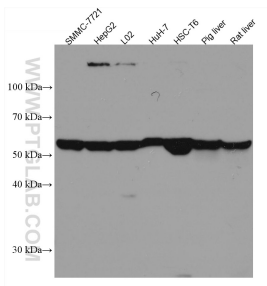
Various lysates were subjected to SDS PAGE followed by western blot with 67530-1-Ig (SLC2A9 antibody) at dilution of 1:10000 incubated at room temperature for 1.5 hours.



Immunohistochemical analysis of paraffin-embedded human liver tissue slide using 67530-1-Ig (SLC2A9 antibody) at dilution of 1:1000 (under 40x lens). Heat mediated antigen retrieval with Tris-EDTA buffer (pH 9.0).



Immunofluorescent analysis of (4% PFA) fixed human hepatocirrhosis tissue using SLC2A9 antibody (67530-1-Ig, Clone: 2D6E1) at dilution of 1:400 and CoraLite®488-Conjugated AffiniPure Goat Anti-Mouse IgG(H+L).



Various lysates were subjected to SDS PAGE followed by western blot with 67530-1-Ig (SLC2A9 antibody) at dilution of 1:10000 incubated at room temperature for 1.5 hours.