

For Research Use Only

CMPK1 Monoclonal antibody, PBS Only (Detector)

Catalog Number: 67519-3-PBS



Basic Information

Catalog Number:

67519-3-PBS

Source:

Mouse

Isotype:

IgG1

Immunogen Catalog Number:

AG30084

GenBank Accession Number:

BC014961

GeneID (NCBI):

51727

UNIPROT ID:

P30085

Full Name:

cytidine monophosphate (UMP-CMP)
kinase 1, cytosolic

Calculated MW:

228 aa, 26 kDa

Purification Method:

Protein G Magarose purification

CloneNo.:

3E3F3

Applications

Tested Applications:

Cytometric bead array, Indirect ELISA

Species Specificity:

human

Background Information

Storage

Storage:

Store at -80°C.

The product is shipped with ice packs. Upon receipt, store it immediately at -80°C

Storage Buffer:

PBS only, pH7.3

For technical support and original validation data for this product please contact:

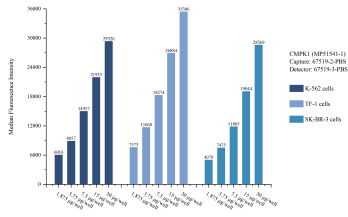
T: 4006900926

E: Proteintech-CN@ptglab.com

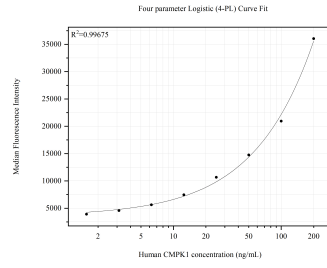
W: ptgcn.com

This product is exclusively available under Proteintech Group brand and is not available to purchase from any other manufacturer.

Selected Validation Data



Cytometric bead array sample test of MP51541-1, CMPK1 Monoclonal Matched Antibody Pair, PBS Only. Capture antibody: 67519-2-PBS. Detection antibody: 67519-3-PBS.



Cytometric bead array standard curve of MP51541-1, CMPK1 Monoclonal Matched Antibody Pair, PBS Only. Capture antibody: 67519-2-PBS. Detection antibody: 67519-3-PBS. Standard: Ag30084. Range: 1.563-200 ng/mL