

For Research Use Only

CMPK1 Monoclonal antibody

Catalog Number: 67519-1-Ig



Basic Information

Catalog Number: 67519-1-Ig	GenBank Accession Number: BC014961	Purification Method: Protein A purification
Size: 1000 µg/ml	GeneID (NCBI): 51727	CloneNo.: 2D11G7
Source: Mouse	UNIPROT ID: P30085	Recommended Dilutions: WB 1:5000-1:50000 IF 1:200-1:800
Isotype: IgG2b	Full Name: cytidine monophosphate (UMP-CMP) kinase 1, cytosolic	
Immunogen Catalog Number: AG30084	Calculated MW: 228 aa, 26 kDa	
	Observed MW: 22-26 kDa	

Applications

Tested Applications: IF/ICC, WB, ELISA	Positive Controls:
Species Specificity: Human	WB : HeLa cells, HEK-293 cells, Jurkat cells IF : HeLa cells,

Background Information

Pyrimidine nucleoside monophosphate kinase [UMP/CMP kinase (UMP/CMPK)] (CMPK1) is also named as CMK, CMPK, UCK, UMK, UMPK and belongs to the adenylate kinase family. It plays a crucial role in the formation of UDP, CDP, and dCDP, which are required for cellular nucleic acid synthesis (PMID:11912132). CMPK1 can use a broad spectrum of phosphate donors but the best phosphate donors are ATP and dATP. CMPK1 has been reported as a prognostic marker for non-small cell lung cancer, pancreatic cancer and breast cancer (PMID: 21642870, 22838950, 27558661). The longest deduced protein contains 228 amino acids and has a calculated molecular mass of 26 kDa. However, translation likely begins at the second initiation methionine, resulting in a protein of 196 amino acids (PMID:10462544). The shorter form is the endogenously translated protein (PMID:11912132). CMPK1 has 3 isoforms with the molecular mass of 22, 16 and 26 kDa.

Storage

Storage:
Store at -20°C. Stable for one year after shipment.
Storage Buffer:
PBS with 0.02% sodium azide and 50% glycerol pH 7.3.
Aliquoting is unnecessary for -20°C storage

For technical support and original validation data for this product please contact:

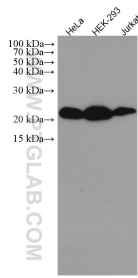
T: 4006900926

E: Proteintech-CN@ptglab.com

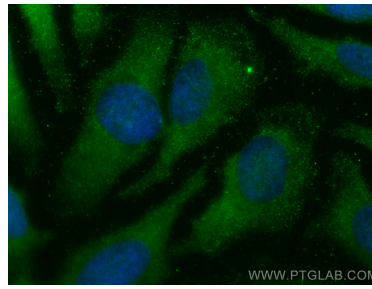
W: ptgcn.com

This product is exclusively available under Proteintech Group brand and is not available to purchase from any other manufacturer.

Selected Validation Data



Various lysates were subjected to SDS PAGE followed by western blot with 67519-1-Ig (CMPK1 antibody) at dilution of 1:10000 incubated at room temperature for 1.5 hours.



Immunofluorescent analysis of (-20°C Ethanol) fixed HeLa cells using CMPK1 antibody (67519-1-Ig, Clone: 2D11G7) at dilution of 1:400 and CoraLite®488-Conjugated AffiniPure Goat Anti-Mouse IgG(H+L).