

For Research Use Only

TPI1 Monoclonal antibody, PBS Only

Catalog Number: 67515-1-PBS

Featured Product



Basic Information

Catalog Number:

67515-1-PBS

Size:

1 mg/ml

Source:

Mouse

Isotype:

IgG1

Immunogen Catalog Number:

AG16653

GenBank Accession Number:

BC007086

GeneID (NCBI):

7167

UNIPROT ID:

P60174

Full Name:

triosephosphate isomerase 1

Calculated MW:

27 kDa

Observed MW:

27 kDa

Purification Method:

Protein G purification

CloneNo.:

2E7E5

Applications

Tested Applications:

WB, Indirect ELISA, IHC, IF

Species Specificity:

Human, Mouse, Rat

Background Information

TPI1 (Triosephosphate isomerase) is also named as TIM, TPI and belongs to the triosephosphate isomerase family. It is a key enzyme in cell metabolism that controls the glycolytic flow and energy production through the interconversion of dihydroxyacetone phosphate (DHAP) and D-glyceraldehyde 3-phosphate (G3P) (PMID:19251756). Defects in TPI1 are the cause of triosephosphate isomerase deficiency (TPI deficiency). It can exist as a homodimer (PMID:18562316).

Storage

Storage:

Store at -80°C.

The product is shipped with ice packs. Upon receipt, store it immediately at -80°C

Storage Buffer:

PBS Only

For technical support and original validation data for this product please contact:

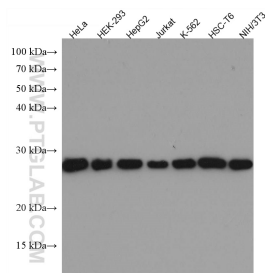
T: 4006900926

E: Proteintech-CN@ptglab.com

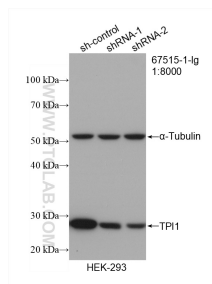
W: ptgcn.com

This product is exclusively available under Proteintech Group brand and is not available to purchase from any other manufacturer.

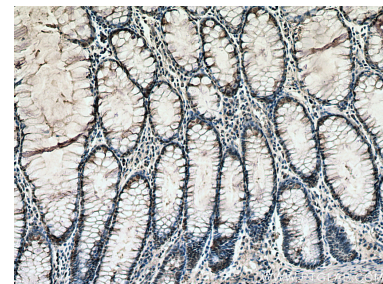
Selected Validation Data



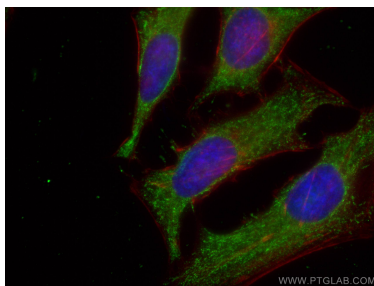
Various lysates were subjected to SDS PAGE followed by western blot with 67515-1-Ig (TPI1 antibody) at dilution of 1:10000 incubated at room temperature for 1.5 hours. This data was developed using the same antibody clone with 67515-1-PBS in a different storage buffer formulation.



WB result of TPI1 antibody (67515-1-Ig; 1:8000; incubated at room temperature for 1.5 hours) with sh-Control and sh-TPI1 transfected HEK-293 cells. This data was developed using the same antibody clone with 67515-1-PBS in a different storage buffer formulation.



Immunohistochemical analysis of paraffin-embedded human colon cancer tissue slide using 67515-1-Ig (TPI1 antibody) at dilution of 1:1000 (under 10x lens). Heat mediated antigen retrieval with Tris-EDTA buffer (pH 9.0). This data was developed using the same antibody clone with 67515-1-PBS in a different storage buffer formulation.



Immunofluorescent analysis of (-20°C Ethanol) fixed HeLa cells using TPI1 antibody (67515-1-Ig, Clone: 2E7E5) at dilution of 1:400 and CoraLite®488-Conjugated AffiniPure Goat Anti-Mouse IgG(H+L), CL594-Phalloidin (red). This data was developed using the same antibody clone with 67515-1-PBS in a different storage buffer formulation.