

RBM15B Monoclonal antibody, PBS Only

Catalog Number: 67506-1-PBS

Basic Information

Catalog Number: 67506-1-PBS	GenBank Accession Number: BC001367	Purification Method: Protein A purification
Size: 1 mg/ml	GeneID (NCBI): 29890	CloneNo.: 1C2C11
Source: Mouse	UNIPROT ID: Q8NDT2	
Isotype: IgG1	Full Name: RNA binding motif protein 15B	
Immunogen Catalog Number: AG17853	Calculated MW: 890 aa, 97 kDa	
	Observed MW: 105 kDa	

Applications

Tested Applications:
WB, Indirect ELISA, IHC

Species Specificity:
Human, rat

Background Information

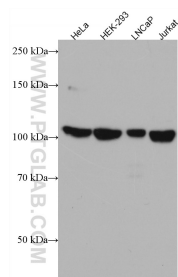
RBM15B, one members of the SPEN (Split-end) family of proteins, have repressor function in several signaling pathways and may bind to RNA through interaction with spliceosome components. Present polyclonal anti-RBM15B antibody was produced by immunizing animals with C-terminus of RBM15B, which homolog with a short form of RBM15B(563aa, ~70kDa).

Storage

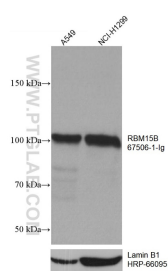
Storage:
Store at -80°C.
The product is shipped with ice packs. Upon receipt, store it immediately at -80°C

Storage Buffer:
PBS Only

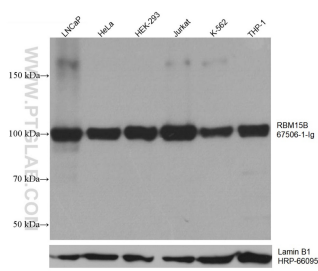
Selected Validation Data



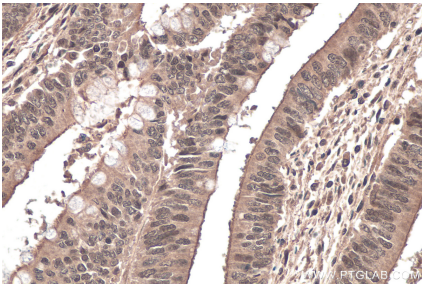
Various lysates were subjected to SDS PAGE followed by western blot with 67506-1-Ig (RBM15B antibody) at dilution of 1:3000 incubated at room temperature for 1.5 hours. This data was developed using the same antibody clone with 67506-1-PBS in a different storage buffer formulation.



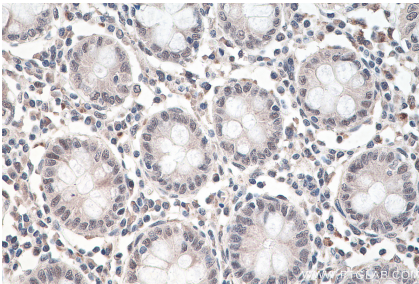
A549 cells were subjected to SDS PAGE followed by western blot with 67506-1-Ig (RBM15B antibody) at dilution of 1:10000 incubated at room temperature for 1.5 hours. The membrane was stripped and reblotted with HRP-conjugated Lamin B1 Monoclonal antibody (HRP-66095) as loading control. This data was developed using the same antibody clone with 67506-1-PBS in a different storage buffer formulation.



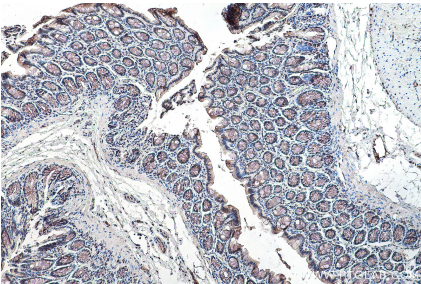
Various lysates were subjected to SDS PAGE followed by western blot with 67506-1-Ig (RBM15B antibody) at dilution of 1:10000 incubated at room temperature for 1.5 hours. The membrane was stripped and reblotted with HRP-conjugated Lamin B1 Monoclonal antibody (HRP-66095) as loading control. This data was developed using the same antibody clone with 67506-1-PBS in a different storage buffer formulation.



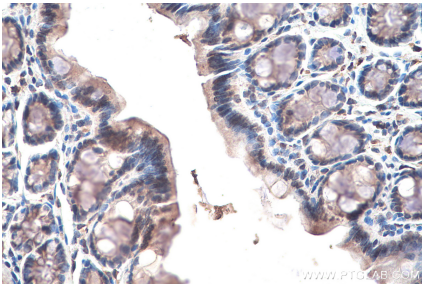
Immunohistochemical analysis of paraffin-embedded human colon cancer tissue slide using 67506-1-Ig (RBM15B antibody) at dilution of 1:1000 (under 40x lens). Heat mediated antigen retrieval with Tris-EDTA buffer (pH 9.0). This data was developed using the same antibody clone with 67506-1-PBS in a different storage buffer formulation.



Immunohistochemical analysis of paraffin-embedded human colon tissue slide using 67506-1-Ig (RBM15B antibody) at dilution of 1:2000 (under 40x lens). Heat mediated antigen retrieval with Tris-EDTA buffer (pH 9.0). This data was developed using the same antibody clone with 67506-1-PBS in a different storage buffer formulation.



Immunohistochemical analysis of paraffin-embedded rat colon tissue slide using 67506-1-Ig (RBM15B antibody) at dilution of 1:2000 (under 10x lens). Heat mediated antigen retrieval with Tris-EDTA buffer (pH 9.0). This data was developed using the same antibody clone with 67506-1-PBS in a different storage buffer formulation.



Immunohistochemical analysis of paraffin-embedded rat colon tissue slide using 67506-1-Ig (RBM15B antibody) at dilution of 1:2000 (under 40x lens). Heat mediated antigen retrieval with Tris-EDTA buffer (pH 9.0). This data was developed using the same antibody clone with 67506-1-PBS in a different storage buffer formulation.