

For Research Use Only

TMF1 Monoclonal antibody

Catalog Number: 67505-1-Ig

Featured Product



Basic Information

Catalog Number: 67505-1-Ig	GenBank Accession Number: BC126123	Purification Method: Protein A purification
Concentration: 1000 ug/ml	GeneID (NCBI): 7110	CloneNo.: 3G12F2
Source: Mouse	UNIPROT ID: P82094	Recommended Dilutions: WB 1:5000-1:50000 IHC 1:250-1:1000 IF/ICC 1:400-1:1600
Isotype: IgG1	Full Name: TATA element modulatory factor 1	
Immunogen Catalog Number: AG17666	Calculated MW: 1093 aa, 123 kDa Observed MW: 150-160 kDa	

Applications

Tested Applications:
WB, IHC, IF/ICC, ELISA

Species Specificity:
human, mouse, rat

Note-IHC: suggested antigen retrieval with TE buffer pH 9.0; (*) Alternatively, antigen retrieval may be performed with citrate buffer pH 6.0

Positive Controls:

WB : LNCaP cells, HeLa cells, HepG2 cells, HEK-293 cells, Jurkat cells, K-562 cells, HSC-T6 cells, NIH/3T3 cells

IHC : mouse brain tissue, mouse kidney tissue, rat brain tissue

IF/ICC : HepG2 cells, A431 cells

Background Information

TMF1, also named as ARA160, is a potential coactivator of the androgen receptor. TMF1 mediates STAT3 degradation. TMF1 plays critical roles in two RAB6-dependent retrograde transport processes: one from endosomes to the Golgi and the other from the Golgi to the ER. TMF1 binds the HIV-1 TATA element and inhibits transcriptional activation by the TATA-binding protein (TBP). The antibody is specific to TMF1. TMF1 can be detected as 150-160 kDa after posttranslational modification.

Storage

Storage:
Store at -20°C. Stable for one year after shipment.
Storage Buffer:
PBS with 0.02% sodium azide and 50% glycerol, pH7.3
Aliquoting is unnecessary for -20°C storage

For technical support and original validation data for this product please contact:

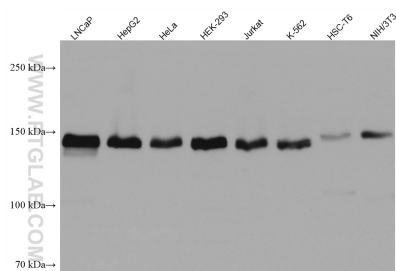
T: 4006900926

E: Proteintech-CN@ptglab.com

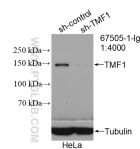
W: ptgcn.com

This product is exclusively available under Proteintech Group brand and is not available to purchase from any other manufacturer.

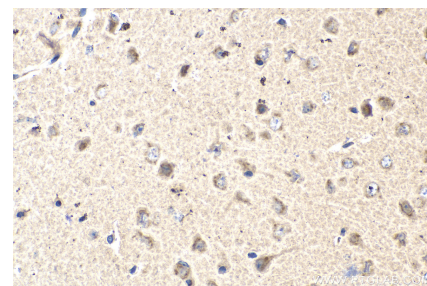
Selected Validation Data



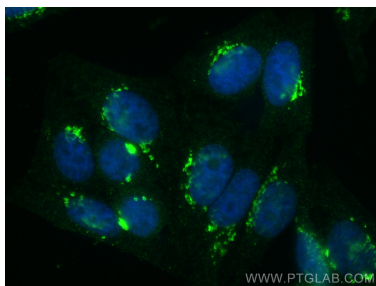
Various lysates were subjected to SDS PAGE followed by western blot with 67505-1-Ig (TMF1 antibody) at dilution of 1:10000 incubated at room temperature for 1.5 hours.



WB result of TMF1 antibody (67505-1-Ig: 1:4000; incubated at room temperature for 1.5 hours) with sh-Control and sh-TMF1 transfected HeLa cells.



Immunohistochemical analysis of paraffin-embedded mouse brain tissue slide using 67505-1-Ig (TMF1 antibody) at dilution of 1:500 (under 40x lens). Heat mediated antigen retrieval with Tris-EDTA buffer (pH 9.0).



Immunofluorescent analysis of (4% PFA) fixed HepG2 cells using TMF1 antibody (67505-1-Ig, Clone: 3G12F2) at dilution of 1:800 and CoraLite®488-Conjugated AffiniPure Goat Anti-Mouse IgG(H+L).