

# RAN Monoclonal antibody

Catalog Number: 67500-1-Ig 1 Publications

## Basic Information

<b>Catalog Number:</b> 67500-1-Ig	<b>GenBank Accession Number:</b> BC004272	<b>Purification Method:</b> Protein A purification
<b>Size:</b> 1700 µg/ml	<b>GeneID (NCBI):</b> 5901	<b>CloneNo.:</b> 1B11E1
<b>Source:</b> Mouse	<b>UNIPROT ID:</b> P62826	<b>Recommended Dilutions:</b> WB 1:5000-1:50000 IHC 1:200-1:800 IF-P 1:200-1:800
<b>Isotype:</b> IgG2b	<b>Full Name:</b> RAN, member RAS oncogene family	
<b>Immunogen Catalog Number:</b> AG30034	<b>Calculated MW:</b> 25 kDa	
	<b>Observed MW:</b> 24 kDa	

## Applications

<b>Tested Applications:</b> IF-P, IHC, WB, ELISA	<b>Positive Controls:</b>
<b>Cited Applications:</b> IF, IHC	<b>WB :</b> HeLa cells, HEK-293 cells, HepG2 cells, Jurkat cells, HSC-T6 cells, NIH/3T3 cells, 4T1 cells
<b>Species Specificity:</b> Human, mouse, rat	<b>IHC :</b> human colon cancer tissue, human breast cancer tissue
<b>Cited Species:</b> mouse	<b>IF-P :</b> human breast cancer tissue,
<b>Note-IHC: suggested antigen retrieval with TE buffer pH 9.0; (*) Alternatively, antigen retrieval may be performed with citrate buffer pH 6.0</b>	

## Background Information

RAN is also named as ARA24, Ras-like protein TC4 and GTPase Ran, and belongs to the small GTPase superfamily family and the Ran family. GTPase Ran switches between a cytoplasmic GDP- and a nuclear GTP-bound state by nucleotide exchange and GTP hydrolysis (PMID:7819259, PMID:32528950). RAN (GTP-bound form) triggers microtubule assembly at mitotic chromosomes and is required for normal mitotic spindle assembly and chromosome segregation (PMID:10408446, PMID:29040603, PMID:32528950).

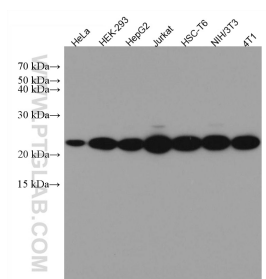
## Notable Publications

Author	Pubmed ID	Journal	Application
Zhaoli Zhang	38254162	Lipids Health Dis	IHC,IF

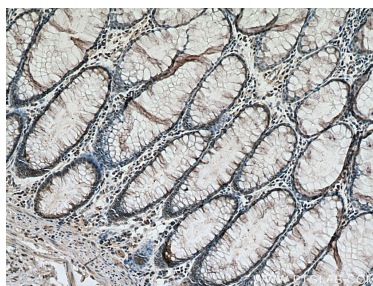
## Storage

**Storage:**  
Store at -20°C. Stable for one year after shipment.  
**Storage Buffer:**  
PBS with 0.02% sodium azide and 50% glycerol pH 7.3.  
Aliquoting is unnecessary for -20°C storage

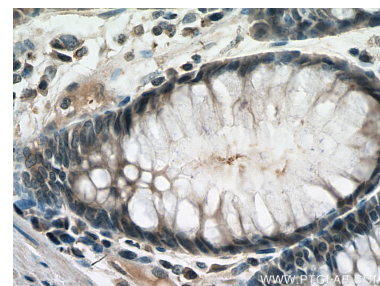
## Selected Validation Data



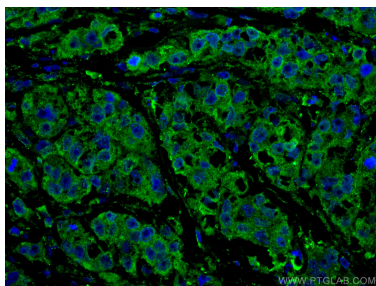
Various lysates were subjected to SDS PAGE followed by western blot with 67500-1-Ig (RAN antibody) at dilution of 1:10000 incubated at room temperature for 1.5 hours.



Immunohistochemical analysis of paraffin-embedded human colon cancer tissue slide using 67500-1-Ig (RAN antibody) at dilution of 1:400 (under 10x lens). Heat mediated antigen retrieval with Tris-EDTA buffer (pH 9.0).



Immunohistochemical analysis of paraffin-embedded human colon cancer tissue slide using 67500-1-Ig (RAN antibody) at dilution of 1:400 (under 40x lens). Heat mediated antigen retrieval with Tris-EDTA buffer (pH 9.0).



Immunofluorescent analysis of (4% PFA) fixed human breast cancer tissue using RAN antibody (67500-1-Ig, Clone: 1B11E1 ) at dilution of 1:400 and CoraLite®488-Conjugated AffiniPure Goat Anti-Mouse IgG(H+L).