

For Research Use Only

AKR1B1 Monoclonal antibody

Catalog Number: 67498-1-Ig

Featured Product

2 Publications



Basic Information

Catalog Number:

67498-1-Ig

Concentration:

1000 ug/ml

Source:

Mouse

Isotype:

IgG1

Immunogen Catalog Number:

AG7571

GenBank Accession Number:

BC000260

GeneID (NCBI):

231

UNIPROT ID:

P15121

Full Name:

aldo-keto reductase family 1, member B1 (aldose reductase)

Calculated MW:

36 kDa

Observed MW:

34 kDa

Purification Method:

Protein G purification

CloneNo.:

2F11G5

Recommended Dilutions:

WB 1:2000-1:10000

IHC 1:250-1:1000

IF/ICC 1:200-1:800

Applications

Tested Applications:

WB, IHC, IF/ICC, ELISA

Cited Applications:

WB

Species Specificity:

human, mouse

Cited Species:

human, mouse

Note-IHC: suggested antigen retrieval with TE buffer pH 9.0; (*) Alternatively, antigen retrieval may be performed with citrate buffer pH 6.0

Positive Controls:

WB : HEK-293 cells, HeLa cells, HepG2 cells, Jurkat cells, NIH/3T3 cells, 4T1 cells

IHC : human bladder tissue,

IF/ICC : BxPC-3 cells,

Background Information

Notable Publications

Author	Pubmed ID	Journal	Application
Wei Zhou	34646828	Front Cell Dev Biol	WB
Liman Luo	35882293	Pharmacol Res	WB

Storage

Storage:

Store at -20°C. Stable for one year after shipment.

Storage Buffer:

PBS with 0.02% sodium azide and 50% glycerol, pH7.3

Aliquoting is unnecessary for -20°C storage

For technical support and original validation data for this product please contact:

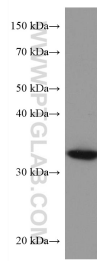
T: 4006900926

E: Proteintech-CN@ptglab.com

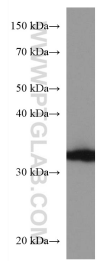
W: ptgcn.com

This product is exclusively available under Proteintech Group brand and is not available to purchase from any other manufacturer.

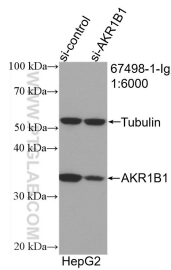
Selected Validation Data



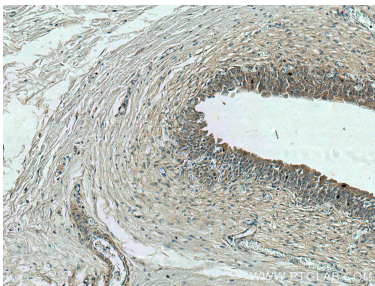
HeLa cells were subjected to SDS PAGE followed by western blot with 67498-1-Ig (AKR1B1 antibody) at dilution of 1:2500 incubated at room temperature for 1.5 hours.



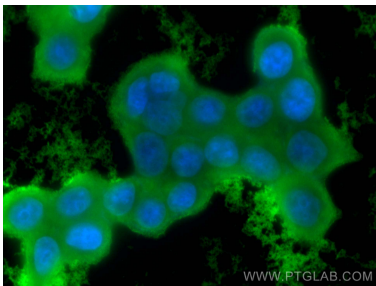
HEK-293 cells were subjected to SDS PAGE followed by western blot with 67498-1-Ig (AKR1B1 antibody) at dilution of 1:2500 incubated at room temperature for 1.5 hours.



WB result of AKR1B1 antibody (67498-1-Ig; 1:6000; incubated at room temperature for 1.5 hours) with sh-Control and sh-AKR1B1 transfected HepG2 cells.



Immunohistochemical analysis of paraffin-embedded human bladder tissue slide using 67498-1-Ig (AKR1B1 antibody) at dilution of 1:500 (under 10x lens)..



Immunofluorescent analysis of (-20°C Ethanol) fixed BxPC-3 cells using AKR1B1 antibody (67498-1-Ig, Clone: 2F11G5) at dilution of 1:400 and Coralite®488-Conjugated AffiniPure Goat Anti-Mouse IgG(H+L).