

For Research Use Only

HSD17B6 Monoclonal antibody

Catalog Number: 67496-1-Ig



Basic Information

Catalog Number:

67496-1-Ig

Size:

1200 µg/ml

Source:

Mouse

Isotype:

IgG1

Immunogen Catalog Number:

AG17330

GenBank Accession Number:

BC020710

GeneID (NCBI):

8630

UNIPROT ID:

O14756

Full Name:

hydroxysteroid (17-beta)
dehydrogenase 6 homolog (mouse)

Calculated MW:

317 aa, 36 kDa

Observed MW:

33-35 kDa

Purification Method:

Protein G purification

CloneNo.:

2D4G6

Recommended Dilutions:

WB 1:1000-1:4000

IHC 1:100-1:1000

Applications

Tested Applications:

IHC, WB, ELISA

Species Specificity:

Human

Note-IHC: suggested antigen retrieval with TE buffer pH 9.0; (*) Alternatively, antigen retrieval may be performed with citrate buffer pH 6.0

Positive Controls:

WB : JAR cells, Daudi cells, HuH-7 cells, HepG2 cells, L02 cells

IHC : human liver cancer tissue,

Background Information

Storage

Storage:

Store at -20°C.

Storage Buffer:

PBS with 0.02% sodium azide and 50% glycerol pH 7.3.

Aliquoting is unnecessary for -20°C storage

For technical support and original validation data for this product please contact:

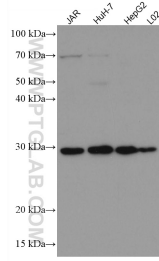
T: 4006900926

E: Proteintech-CN@ptglab.com

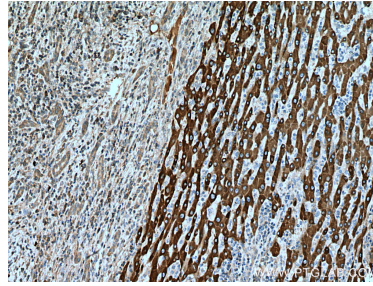
W: ptgcn.com

This product is exclusively available under Proteintech Group brand and is not available to purchase from any other manufacturer.

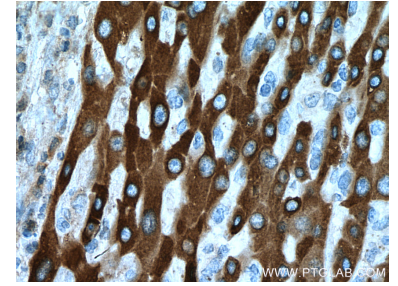
Selected Validation Data



Various lysates were subjected to SDS PAGE followed by western blot with 67496-1-Ig (HSD17B6 antibody) at dilution of 1:2000 incubated at room temperature for 1.5 hours.



Immunohistochemical analysis of paraffin-embedded human liver cancer tissue slide using 67496-1-Ig (HSD17B6 antibody) at dilution of 1:200 (under 10x lens). Heat mediated antigen retrieval with Tris-EDTA buffer (pH 9.0).



Immunohistochemical analysis of paraffin-embedded human liver cancer tissue slide using 67496-1-Ig (HSD17B6 antibody) at dilution of 1:200 (under 40x lens). Heat mediated antigen retrieval with Tris-EDTA buffer (pH 9.0).