

# EEF1A1 Monoclonal antibody, PBS Only

Catalog Number: 67495-1-PBS

## Basic Information

Catalog Number: 67495-1-PBS	GenBank Accession Number: BC014224	Purification Method: Protein A purification
Size: 1mg/ml	GeneID (NCBI): 1915	CloneNo.: 1A9F5
Source: Mouse	UNIPROT ID: P68104	
Isotype: IgG1	Full Name: eukaryotic translation elongation factor 1 alpha 1	
Immunogen Catalog Number: AG1938	Calculated MW: 462 aa, 50 kDa	
	Observed MW: 49 kDa	

## Applications

**Tested Applications:**  
Indirect ELISA, IF/ICC, IHC, WB

**Species Specificity:**  
rat, mouse, human

## Background Information

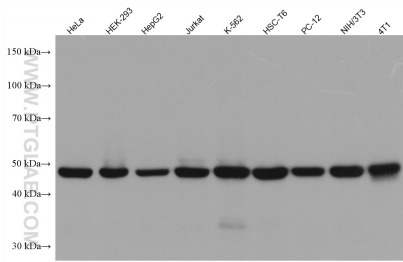
EEF1A1, also named as EEF1A, EF1A and LENG7, belongs to the GTP-binding elongation factor family. This protein promotes the GTP-dependent binding of aminoacyl-tRNA to the A-site of ribosomes during protein biosynthesis. It is a typical housekeeping gene product required for the maintenance of cell proliferation and/or survival. In addition, EEF1A1 protects the aminoester bond against hydrolysis until a correct match between the codon on mRNA and the anti-codon on tRNA can be achieved.

## Storage

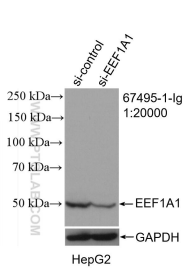
**Storage:**  
Store at -80°C.  
**The product is shipped with ice packs. Upon receipt, store it immediately at -80°C**

**Storage Buffer:**  
PBS Only

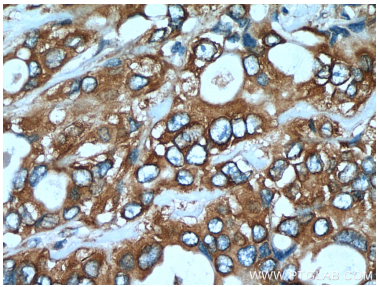
Selected Validation Data



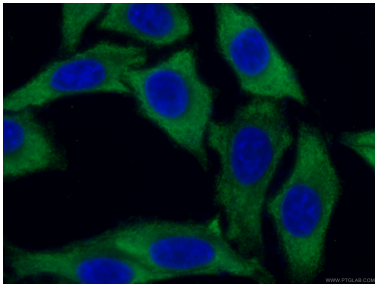
Various lysates were subjected to SDS PAGE followed by western blot with 67495-1-Ig (EEF1A1 antibody) at dilution of 1:10000 incubated at room temperature for 1.5 hours. This data was developed using the same antibody clone with 67495-1-PBS in a different storage buffer formulation.



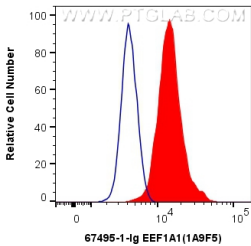
WB result of EEF1A1 antibody (67495-1-Ig; 1:20000; incubated at room temperature for 1.5 hours) with sh-Control and sh-EEF1A1 transfected HepG2 cells. This data was developed using the same antibody clone with 67495-1-PBS in a different storage buffer formulation.



Immunohistochemical analysis of paraffin-embedded human pancreas cancer tissue slide using 67495-1-Ig (EEF1A1 antibody) at dilution of 1:300 (under 40x lens). Heat mediated antigen retrieval with Tris-EDTA buffer (pH 9.0). This data was developed using the same antibody clone with 67495-1-PBS in a different storage buffer formulation.



Immunofluorescent analysis of (-20°C Ethanol) fixed HepG2 cells using 67495-1-Ig (EEF1A1 antibody), at dilution of 1:200 and CoraLite®488-Conjugated AffiniPure Goat Anti-Mouse IgG(H+L). This data was developed using the same antibody clone with 67495-1-PBS in a different storage buffer formulation.



1X10<sup>6</sup> HepG2 cells were intracellularly stained with 0.4 ug Anti-Human EEF1A1 (67495-1-Ig, Clone:1A9F5) and CoraLite®488-Conjugated AffiniPure Goat Anti-Mouse IgG(H+L) at dilution 1:1000 (red), or 0.4 ug Mouse IgG1 Isotype Control (MOPC-21) (65124-1-Ig, Clone: MOPC-21) (blue). Cells were fixed with 4% PFA and permeabilized with Flow Cytometry Perm Buffer (PF00011-C). This data was developed using the same antibody clone with 67495-1-PBS in a

