

For Research Use Only

HRD1/SYVN1 Monoclonal antibody

Catalog Number: 67488-1-Ig

Featured Product

7 Publications



Basic Information

Catalog Number:

67488-1-Ig

Concentration:

1000 ug/ml

Source:

Mouse

Isotype:

IgG2b

Immunogen Catalog Number:

AG4456

GenBank Accession Number:

BC030530

GeneID (NCBI):

84447

UNIPROT ID:

Q86TM6

Full Name:

synovial apoptosis inhibitor 1,
synoviolin

Calculated MW:

617 aa, 68 kDa

Observed MW:

68-76 kDa

Purification Method:

Protein A purification

CloneNo.:

2C8A7

Recommended Dilutions:

WB 1:5000-1:50000

IHC 1:500-1:2000

IF/ICC 1:200-1:800

Applications

Tested Applications:

WB, IHC, IF/ICC, ELISA

Cited Applications:

WB, IF, CoIP

Species Specificity:

human, mouse, rat

Cited Species:

human, mouse, goat

**Note-IHC: suggested antigen retrieval with
TE buffer pH 9.0; (*) Alternatively, antigen
retrieval may be performed with citrate
buffer pH 6.0**

Positive Controls:

WB : A549 cells, 4T1 cells, HeLa cells, NIH/3T3 cells,
HEK-293 cells, HepG2 cells, Jurkat cells

IHC : human liver cancer tissue,

IF/ICC : HeLa cells,

Background Information

HRD1 is also named as SYVN1 (Synovial apoptosis inhibitor 1), KIAA1810. It acts as an E3 ubiquitin-protein ligase which accepts ubiquitin specifically from endoplasmic reticulum-associated UBC7 E2 ligase and transfers it to substrates, promoting their degradation. Two distinct binding sites mediate Hrd1 dimerization or oligomerization, one located within the transmembrane region and another within the cytosolic domain. (PMID:19864457). Western blot analysis detected abundant HRD1 expression in liver and kidney. Mouse liver and spleen expressed Hrd1 as an 85-kD protein (PMID:12646171).

Notable Publications

Author	Pubmed ID	Journal	Application
Zhipeng Sun	36499219	Int J Mol Sci	WB
Yifei Sun	35279748	Cell Mol Life Sci	IF
Heng Li	39640640	Heliyon	WB

Storage

Storage:

Store at -20°C. Stable for one year after shipment.

Storage Buffer:

PBS with 0.02% sodium azide and 50% glycerol, pH7.3

Aliquoting is unnecessary for -20°C storage

For technical support and original validation data for this product please contact:

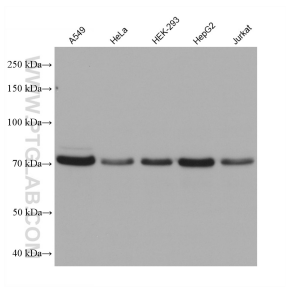
T: 4006900926

E: Proteintech-CN@ptglab.com

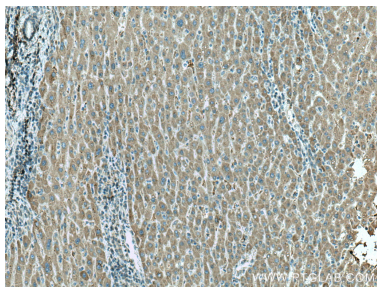
W: ptgcn.com

This product is exclusively available under Proteintech Group brand and is not available to purchase from any other manufacturer.

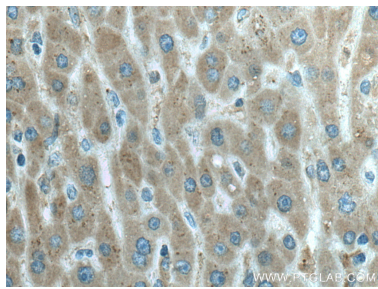
Selected Validation Data



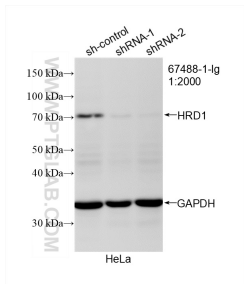
Various lysates were subjected to SDS PAGE followed by western blot with 67488-1-Ig (HRD1/SYVN1 antibody) at dilution of 1:20000 incubated at room temperature for 1.5 hours.



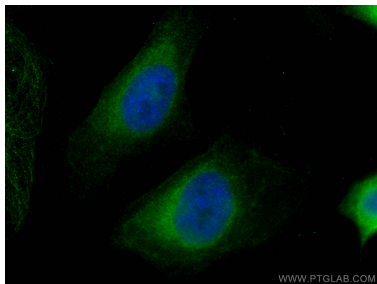
Immunohistochemical analysis of paraffin-embedded human liver cancer tissue slide using 67488-1-Ig (HRD1/SYVN1 antibody) at dilution of 1:1000 (under 10x lens). Heat mediated antigen retrieval with Tris-EDTA buffer (pH 9.0).



Immunohistochemical analysis of paraffin-embedded human liver cancer tissue slide using 67488-1-Ig (HRD1/SYVN1 antibody) at dilution of 1:1000 (under 40x lens). Heat mediated antigen retrieval with Tris-EDTA buffer (pH 9.0).



WB result of HRD1/SYVN1 antibody (67488-1-Ig; 1:2000; incubated at room temperature for 1.5 hours) with sh-Control and sh-HRD1/SYVN1 transfected HeLa cells.



Immunofluorescent analysis of (4% PFA) fixed HeLa cells using HRD1/SYVN1 antibody (67488-1-Ig, Clone: 2C8A7) at dilution of 1:400 and CoraLite®488-Conjugated AffiniPure Goat Anti-Mouse IgG(H+L).