

For Research Use Only

S100P Monoclonal antibody, PBS Only (Capture)

Catalog Number: 67485-1-PBS



Basic Information

Catalog Number:	GenBank Accession Number:	Purification Method:
67485-1-PBS	BC006819	Protein A purification
Concentration:	GeneID (NCBI):	CloneNo.:
1mg/ml	6286	1G6C3
Source:	UNIPROT ID:	
Mouse	P25815	
Isotype:	Full Name:	
IgG2b	S100 calcium binding protein P	
Immunogen Catalog Number:	Calculated MW:	
AG19115	95 aa, 11 kDa	
	Observed MW:	
	10 kDa	

Applications

Tested Applications:
WB, IHC, IF/ICC, Cytometric bead array, Indirect ELISA

Species Specificity:
human

Background Information

S100P protein is a relatively small (95 amino acid) isoform of the S100 protein family that was first isolated from human placenta. Overexpression of S100P has been detected in several cancers such as breast, colon, prostate, pancreatic and lung carcinomas, and the protein has been functionally implicated in carcinogenic processes. S100P protein is widely expressed in both normal and neoplastic tissues. It clearly shows ectopic expression in some cancers. Based on the high expression in certain tumors, S100P could represent a potential target for novel diagnostic and therapeutic applications.

Storage

Storage:
Store at -80°C.
The product is shipped with ice packs. Upon receipt, store it immediately at -80°C

Storage Buffer:
PBS Only

For technical support and original validation data for this product please contact:

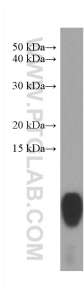
T: 4006900926

E: Proteintech-CN@ptglab.com

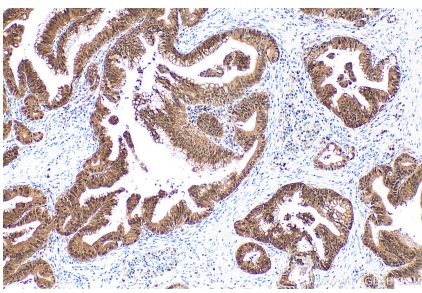
W: ptgcn.com

This product is exclusively available under Proteintech Group brand and is not available to purchase from any other manufacturer.

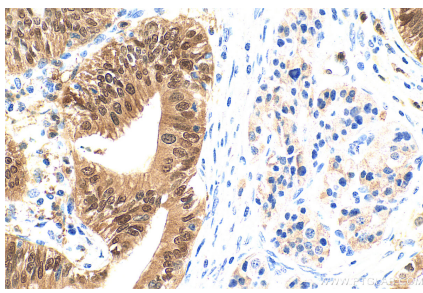
Selected Validation Data



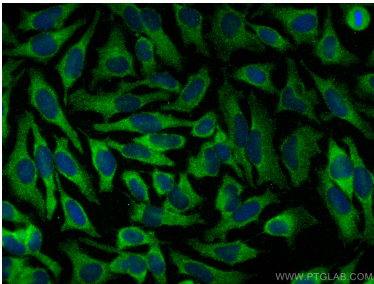
BXPC-3 cells were subjected to SDS PAGE followed by western blot with 67485-1-Ig (S100P antibody) at dilution of 1:3000 incubated at room temperature for 1.5 hours. This data was developed using the same antibody clone with 67485-1-PBS in a different storage buffer formulation.



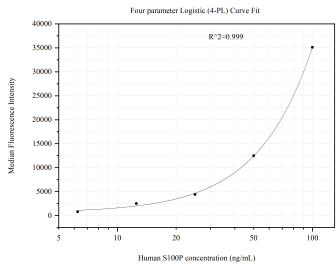
Immunohistochemical analysis of paraffin-embedded human pancreas cancer tissue slide using 67485-1-Ig (S100P antibody) at dilution of 1:8000 (under 10x lens). Heat mediated antigen retrieval with Tris-EDTA buffer (pH 9.0). This data was developed using the same antibody clone with 67485-1-PBS in a different storage buffer formulation.



Immunohistochemical analysis of paraffin-embedded human pancreas cancer tissue slide using 67485-1-Ig (S100P antibody) at dilution of 1:8000 (under 40x lens). Heat mediated antigen retrieval with Tris-EDTA buffer (pH 9.0). This data was developed using the same antibody clone with 67485-1-PBS in a different storage buffer formulation.



Immunofluorescent analysis of (-20°C Methanol) fixed HeLa cells using S100P antibody (67485-1-Ig, Clone: 1G6C3) at dilution of 1:800 and CoraLite®488-Conjugated AffiniPure Goat Anti-Mouse IgG(H+L). This data was developed using the same antibody clone with 67485-1-PBS in a different storage buffer formulation.



Cytometric bead array standard curve of MP51168-2, S100P Monoclonal Matched Antibody Pair, PBS Only. Capture antibody: 67485-1-PBS. Detection antibody: 67485-4-PBS. Standard: Ag19115. Range: 6.25-100 ng/mL