

For Research Use Only

SET Monoclonal antibody, PBS Only

Catalog Number: 67478-1-PBS



Basic Information

Catalog Number:

67478-1-PBS

Size:

1 mg/ml

Source:

Mouse

Isotype:

IgG2b

GenBank Accession Number:

NM_003011

GeneID (NCBI):

6418

UNIPROT ID:

Q01105

Full Name:

SET nuclear oncogene

Calculated MW:

33 kDa

Observed MW:

33-36 kDa

Purification Method:

Protein A purification

CloneNo.:

2B4D1

Applications

Tested Applications:

WB, Indirect ELISA

Species Specificity:

Human, mouse, rat

Background Information

SET, also named as IGAAD, I-2PP2A, TAF-I, IGAAD and PHAPII, belongs to the nucleosome assembly protein (NAP) family. SET is a multifunctional oncoprotein which is ubiquitously expressed in all kinds of cells. The SET protein participates in many cellular processes including cell cycle, cell migration, apoptosis, transcription, and DNA repair. The SET protein plays important roles in facilitating cell proliferation via many pathways that promote tumorigenesis and metastasis.

Storage

Storage:

Store at -80°C.

The product is shipped with ice packs. Upon receipt, store it immediately at -80°C

Storage Buffer:

PBS Only

For technical support and original validation data for this product please contact:

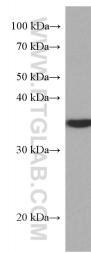
T: 4006900926

E: Proteintech-CN@ptglab.com

W: ptgcn.com

This product is exclusively available under Proteintech Group brand and is not available to purchase from any other manufacturer.

Selected Validation Data



Jurkat cells were subjected to SDS PAGE followed by western blot with 67478-1-Ig (SET antibody) at dilution of 1:3000 incubated at room temperature for 1.5 hours. This data was developed using the same antibody clone with 67478-1-PBS in a different storage buffer formulation.