

For Research Use Only

SET Monoclonal antibody

Catalog Number: 67478-1-Ig **1 Publications**



Basic Information

Catalog Number: 67478-1-Ig	GenBank Accession Number: NM_003011	Purification Method: Protein A purification
Size: 2200 µg/ml	GeneID (NCBI): 6418	CloneNo.: 2B4D1
Source: Mouse	UNIPROT ID: Q01105	Recommended Dilutions: WB 1:1000-1:6000
Isotype: IgG2b	Full Name: SET nuclear oncogene	
	Calculated MW: 33 kDa	
	Observed MW: 33-36 kDa	

Applications

Tested Applications: WB, ELISA	Positive Controls: WB: Jurkat cells, 4T1 cells, HeLa cells, HepG2 cells, HSC-T6 cells
Cited Applications: WB	
Species Specificity: Human, mouse, rat	
Cited Species: human	

Background Information

SET, also named as IGAAD, I-2PP2A, TAF-I, IGAAD and PHAPII, belongs to the nucleosome assembly protein (NAP) family. SET is a multifunctional oncoprotein which is ubiquitously expressed in all kinds of cells. The SET protein participates in many cellular processes including cell cycle, cell migration, apoptosis, transcription, and DNA repair. The SET protein plays important roles in facilitating cell proliferation via many pathways that promote tumorigenesis and metastasis.

Notable Publications

Author	Pubmed ID	Journal	Application
Ling Zhang	37480565	Cell Rep	WB

Storage

Storage:
Store at -20°C.
Storage Buffer:
PBS with 0.02% sodium azide and 50% glycerol pH 7.3.
Aliquoting is unnecessary for -20°C storage

For technical support and original validation data for this product please contact:

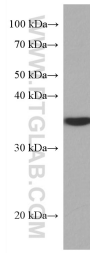
T: 4006900926

E: Proteintech-CN@ptglab.com

W: ptgcn.com

This product is exclusively available under Proteintech Group brand and is not available to purchase from any other manufacturer.

Selected Validation Data



Jurkat cells were subjected to SDS PAGE followed by western blot with 67478-1-Ig (SET antibody) at dilution of 1:3000 incubated at room temperature for 1.5 hours.