

# ERAP2 Monoclonal antibody, PBS Only

Catalog Number: **67477-1-PBS**

## Basic Information

Catalog Number:

67477-1-PBS

Size:

1 mg/ml

Source:

Mouse

Isotype:

IgG2b

Immunogen Catalog Number:

AG30061

GenBank Accession Number:

BC065240

GeneID (NCBI):

64167

UNIPROT ID:

Q6P179

Full Name:

endoplasmic reticulum  
aminopeptidase 2

Calculated MW:

110 kDa

Observed MW:

110-120 kDa

Purification Method:

Protein A purification

CloneNo.:

2B11A2

## Applications

Tested Applications:

WB, Indirect ELISA

Species Specificity:

Human, Rat

## Background Information

ERAP2 (Endoplasmic reticulum aminopeptidase 2) is also named as LRAP (Leukocyte-derived arginine aminopeptidase). It plays a central role in peptide trimming, a step required for the generation of most HLA class I-binding peptides. ERAP2 can form heterodimers with ERAP1 (PMID:15908954). Defects in the expression of ERAP2 may cause improper antigen processing, possibly leading to favor tumor escape from the immune surveillance. ERAP2 has the calculated molecular mass of 105-110 kDa, and apparent molecular mass of 120 kDa due to the glycosylation.

## Storage

Storage:

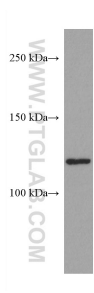
Store at -80°C.

**The product is shipped with ice packs. Upon receipt, store it immediately at -80°C**

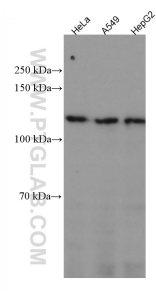
Storage Buffer:

PBS Only

## Selected Validation Data



A549 cells were subjected to SDS PAGE followed by western blot with 67477-1-Ig (ERAP2 antibody) at dilution of 1:3000 incubated at room temperature for 1.5 hours. This data was developed using the same antibody clone with 67477-1-PBS in a different storage buffer formulation.



Various lysates were subjected to SDS PAGE followed by western blot with 67477-1-Ig (ERAP2 antibody) at dilution of 1:2000 incubated at room temperature for 1.5 hours. This data was developed using the same antibody clone with 67477-1-PBS in a different storage buffer formulation.