

# ERAP2 Monoclonal antibody

Catalog Number: 67477-1-Ig

1 Publications

## Basic Information

**Catalog Number:**

67477-1-Ig

**Size:**

1900 µg/ml

**Source:**

Mouse

**Isotype:**

IgG2b

**Immunogen Catalog Number:**

AG30061

**GenBank Accession Number:**

BC065240

**GeneID (NCBI):**

64167

**UNIPROT ID:**

Q6P179

**Full Name:**endoplasmic reticulum  
aminopeptidase 2**Calculated MW:**

110 kDa

**Observed MW:**

110-120 kDa

**Purification Method:**

Protein A purification

**CloneNo.:**

2B11A2

**Recommended Dilutions:**

WB 1:1000-1:5000

## Applications

**Tested Applications:**

WB, ELISA

**Cited Applications:**

WB

**Species Specificity:**

Human, Rat

**Cited Species:**

human

**Positive Controls:**

WB : A549 cells, HeLa cells, HepG2 cells, HSC-T6 cells

## Background Information

ERAP2 (Endoplasmic reticulum aminopeptidase 2) is also named as LRAP (Leukocyte-derived arginine aminopeptidase). It plays a central role in peptide trimming, a step required for the generation of most HLA class I-binding peptides. ERAP2 can form heterodimers with ERAP1 (PMID:15908954). Defects in the expression of ERAP2 may cause improper antigen processing, possibly leading to favor tumor escape from the immune surveillance. ERAP2 has the calculated molecular mass of 105-110 kDa, and apparent molecular mass of 120 kDa due to the glycosylation.

## Notable Publications

Author	Pubmed ID	Journal	Application
Pian Yu	36214762	Aging (Albany NY)	WB

## Storage

**Storage:**

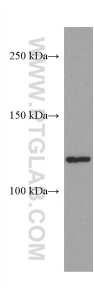
Store at -20°C.

**Storage Buffer:**

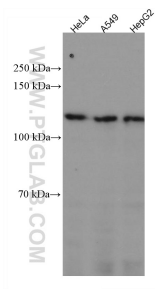
PBS with 0.02% sodium azide and 50% glycerol pH 7.3.

Aliquoting is unnecessary for -20°C storage

# Selected Validation Data



A549 cells were subjected to SDS PAGE followed by western blot with 67477-1-Ig (ERAP2 antibody) at dilution of 1:3000 incubated at room temperature for 1.5 hours.



Various lysates were subjected to SDS PAGE followed by western blot with 67477-1-Ig (ERAP2 antibody) at dilution of 1:2000 incubated at room temperature for 1.5 hours.