

For Research Use Only

# MIS12 Monoclonal antibody

Catalog Number: 67475-1-Ig



## Basic Information

Catalog Number:

67475-1-Ig

Size:

1800 µg/ml

Source:

Mouse

Isotype:

IgG2a

Immunogen Catalog Number:

AG16826

GenBank Accession Number:

BC000229

GeneID (NCBI):

79003

UNIPROT ID:

Q9H081

Full Name:

MIS12, MIND kinetochore complex component, homolog (yeast)

Calculated MW:

205 aa, 24 kDa

Observed MW:

25 kDa

Purification Method:

Protein A purification

CloneNo.:

2G5F6

Recommended Dilutions:

WB 1:1000-1:6000

## Applications

Tested Applications:

WB, ELISA

Species Specificity:

Human

Positive Controls:

WB : HeLa cells, HEK-293 cells, HepG2 cells, Jurkat cells

## Background Information

### Storage

Storage:

Store at -20°C.

Storage Buffer:

PBS with 0.02% sodium azide and 50% glycerol pH 7.3.

Aliquoting is unnecessary for -20°C storage

For technical support and original validation data for this product please contact:

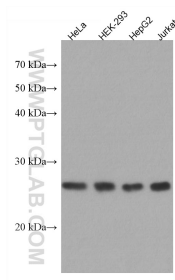
T: 4006900926

E: [Proteintech-CN@ptglab.com](mailto:Proteintech-CN@ptglab.com)

W: [ptgcn.com](http://ptgcn.com)

This product is exclusively available under Proteintech Group brand and is not available to purchase from any other manufacturer.

## Selected Validation Data



Various lysates were subjected to SDS PAGE followed by western blot with 67475-1-Ig (MIS12 antibody) at dilution of 1:3000 incubated at room temperature for 1.5 hours.