

# PLCL2 Monoclonal antibody, PBS Only

Catalog Number: 67471-1-PBS

## Basic Information

Catalog Number:

67471-1-PBS

Size:

1 mg/ml

Source:

Mouse

Isotype:

IgG1

Immunogen Catalog Number:

AG11461

GenBank Accession Number:

BC036392

GeneID (NCBI):

23228

UNIPROT ID:

Q9UPRO

Full Name:

phospholipase C-like 2

Calculated MW:

126 kDa

Observed MW:

126 kDa

Purification Method:

Protein G purification

CloneNo.:

1C8A4

## Applications

Tested Applications:

WB, Indirect ELISA, IF

Species Specificity:

Human, Rat, Mouse, Pig

## Background Information

PLCL2, a novel phospholipase C-like protein, is expressed in lymphocytes and platelets. The expression of PLCL2 is associated with the proliferation of mature B cells in the immune system. PLCL2 is a new susceptibility loci for myocardial infarction. It has been shown that PLCL2 plays a key role in the pathogenesis of atherosclerosis and systemic sclerosis. There are three isoforms of PLCL2 protein and 67471-1-Ig antibody detects the 126 kDa band in SDS-PAGE. (PMID: 24916648, 25880423)

## Storage

Storage:

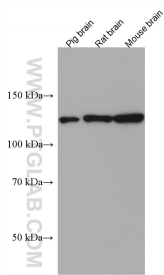
Store at -80°C.

**The product is shipped with ice packs. Upon receipt, store it immediately at -80°C**

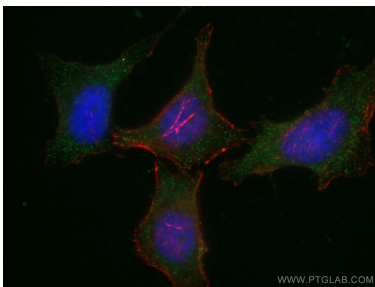
Storage Buffer:

PBS Only

# Selected Validation Data



Various lysates were subjected to SDS PAGE followed by western blot with 67471-1-Ig (PLCL2 antibody) at dilution of 1:3000 incubated at room temperature for 1.5 hours. This data was developed using the same antibody clone with 67471-1-PBS in a different storage buffer formulation.



Immunofluorescent analysis of (-20°C Ethanol) fixed HeLa cells using 67471-1-Ig (PLCL2 antibody), at dilution of 1:200 and CoraLite® 488-Conjugated AffiniPure Goat Anti-Mouse IgG(H+L). This data was developed using the same antibody clone with 67471-1-PBS in a different storage buffer formulation.