

For Research Use Only

MGME1 Monoclonal antibody

Catalog Number: 67468-1-Ig

Featured Product

2 Publications



Basic Information

Catalog Number:

67468-1-Ig

Concentration:

2100 ug/ml

Source:

Mouse

Isotype:

IgG1

Immunogen Catalog Number:

AG19644

GenBank Accession Number:

BC016869

GeneID (NCBI):

92667

UNIPROT ID:

Q9BQP7

Full Name:

chromosome 20 open reading frame

72

Calculated MW:

344 aa, 39 kDa

Observed MW:

36-39 kDa

Purification Method:

Protein G purification

CloneNo.:

2C4G1

Recommended Dilutions:

WB 1:2000-1:10000

IHC 1:150-1:600

Applications

Tested Applications:

WB, IHC, ELISA

Cited Applications:

WB, IP

Species Specificity:

human

Cited Species:

human

Note-IHC: suggested antigen retrieval with TE buffer pH 9.0; (*) Alternatively, antigen retrieval may be performed with citrate buffer pH 6.0

Positive Controls:

WB : HeLa cells, HL-60 cells, HepG2 cells, LNCaP cells, A549 cells, Jurkat cells, K-562 cells

IHC : human lung cancer tissue, human colon cancer tissue

Background Information

Notable Publications

Author	Pubmed ID	Journal	Application
Jiandong Zhang	40088676	Biochem Biophys Res Commun	WB, IP
Feng Xiao	37166417	Aging (Albany NY)	WB

Storage

Storage:

Store at -20°C. Stable for one year after shipment.

Storage Buffer:

PBS with 0.02% sodium azide and 50% glycerol, pH7.3

Aliquoting is unnecessary for -20°C storage

For technical support and original validation data for this product please contact:

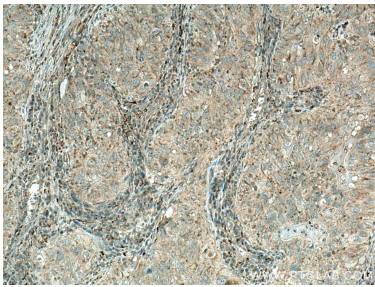
T: 4006900926

E: Proteintech-CN@ptglab.com

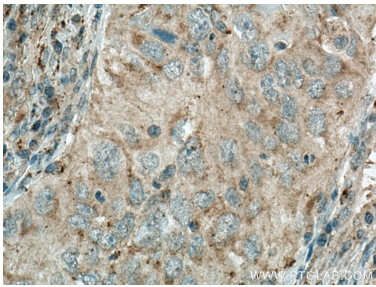
W: ptgcn.com

This product is exclusively available under Proteintech Group brand and is not available to purchase from any other manufacturer.

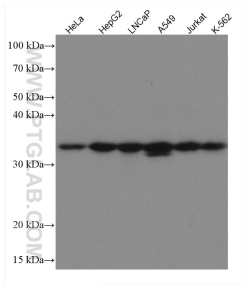
Selected Validation Data



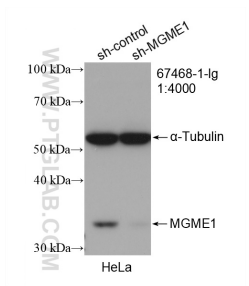
Immunohistochemical analysis of paraffin-embedded human lung cancer tissue slide using 67468-1-Ig (MGME1 antibody) at dilution of 1:300 (under 10x lens). Heat mediated antigen retrieval with Tris-EDTA buffer (pH 9.0).



Immunohistochemical analysis of paraffin-embedded human lung cancer tissue slide using 67468-1-Ig (MGME1 antibody) at dilution of 1:300 (under 40x lens). Heat mediated antigen retrieval with Tris-EDTA buffer (pH 9.0).



Various lysates were subjected to SDS PAGE followed by western blot with 67468-1-Ig (MGME1 antibody) at dilution of 1:5000 incubated at room temperature for 1.5 hours.



WB result of MGME1 antibody (67468-1-Ig; 1:4000; incubated at room temperature for 1.5 hours) with sh-Control and sh-MGME1 transfected HeLa cells.