

For Research Use Only

# PSMG3 Monoclonal antibody

Catalog Number: 67466-1-Ig **1 Publications**



## Basic Information

Catalog Number: 67466-1-Ig	GenBank Accession Number: BC004308	Purification Method: Protein A purification
Concentration: 1500 µg/ml	GeneID (NCBI): 84262	CloneNo.: 2H9C3
Source: Mouse	UNIPROT ID: Q9BT73	Recommended Dilutions: WB 1:2000-1:10000 IF/ICC 1:400-1:1600
Isotype: IgG2b	Full Name: proteasome (prosome, macropain) assembly chaperone 3	
Immunogen Catalog Number: AG8384	Calculated MW: 13 kDa	
	Observed MW: 13 kDa	

## Applications

Tested Applications: WB, IF/ICC, ELISA	Positive Controls:
Cited Applications: WB	WB : LNCaP cells, Jurkat cells, K-562 cells, HL-60 cells, A549 cells, HeLa cells, HEK-293 cells
Species Specificity: Human	IF/ICC : HeLa cells,
Cited Species: human	

## Background Information

### Notable Publications

Author	Pubmed ID	Journal	Application
Jason Wang	39868238	bioRxiv	WB

## Storage

Storage:  
Store at -20°C. Stable for one year after shipment.  
Storage Buffer:  
PBS with 0.02% sodium azide and 50% glycerol pH 7.3.  
Aliquoting is unnecessary for -20°C storage

For technical support and original validation data for this product please contact:

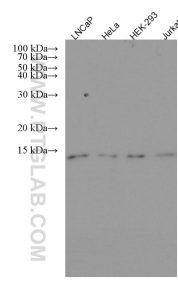
T: 4006900926

E: [Proteintech-CN@ptglab.com](mailto:Proteintech-CN@ptglab.com)

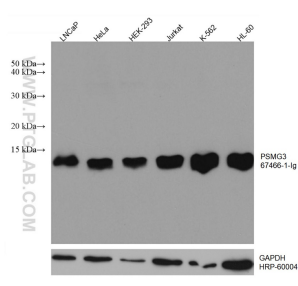
W: [ptgcn.com](http://ptgcn.com)

This product is exclusively available under Proteintech Group brand and is not available to purchase from any other manufacturer.

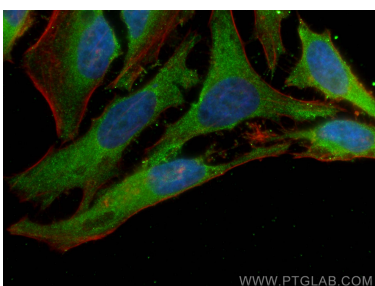
## Selected Validation Data



Various lysates were subjected to SDS PAGE followed by western blot with 67466-1-Ig (PSMG3 antibody) at dilution of 1:5000 incubated at room temperature for 1.5 hours.



Various lysates were subjected to SDS PAGE followed by western blot with 67466-1-Ig (PSMG3 antibody) at dilution of 1:5000 incubated at room temperature for 1.5 hours. The membrane was stripped and reblotted with HRP-conjugated GAPDH Monoclonal antibody (HRP-60004) as loading control.



Immunofluorescent analysis of (4% PFA) fixed HeLa cells using PSMG3 antibody (67466-1-Ig, Clone: 2H9C3) at dilution of 1:800 and CoraLite®488-Conjugated Goat Anti-Mouse IgG(H+L), CL594-Phalloidin (red).