

For Research Use Only

C20orf3/APMAP Monoclonal antibody

Catalog Number: 67464-1-Ig

Featured Product



Basic Information

Catalog Number:

67464-1-Ig

Concentration:

1000 ug/ml

Source:

Mouse

Isotype:

IgG1

Immunogen Catalog Number:

AG29996

GenBank Accession Number:

BC003501

GeneID (NCBI):

57136

UNIPROT ID:

Q9HDC9

Full Name:

chromosome 20 open reading frame 3

Calculated MW:

416 aa, 46 kDa

Observed MW:

42-46 kDa

Purification Method:

Protein G purification

CloneNo.:

1C6C2

Recommended Dilutions:

WB 1:5000-1:50000

IHC 1:500-1:2000

Applications

Tested Applications:

WB, IHC, ELISA

Species Specificity:

human, mouse, rat, rabbit

Note-IHC: suggested antigen retrieval with *TE buffer pH 9.0*; (*) Alternatively, antigen retrieval may be performed with *citrate buffer pH 6.0*

Positive Controls:

WB : Jurkat cells, HSC-T6 cells, rabbit liver tissue, HepG2 cells, LNCaP cells, NIH/3T3 cells, human placenta tissue, mouse liver tissue, rat liver tissue

IHC : human prostate cancer tissue,

Background Information

Storage

Storage:

Store at -20°C. Stable for one year after shipment.

Storage Buffer:

PBS with 0.02% sodium azide and 50% glycerol, pH7.3

Aliquoting is unnecessary for -20°C storage

For technical support and original validation data for this product please contact:

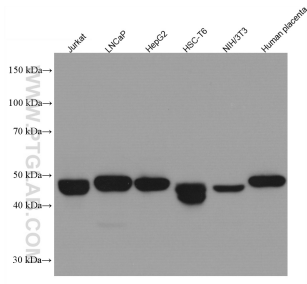
T: 4006900926

E: Proteintech-CN@ptglab.com

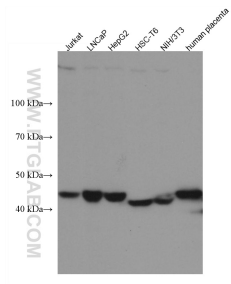
W: ptgcn.com

This product is exclusively available under Proteintech Group brand and is not available to purchase from any other manufacturer.

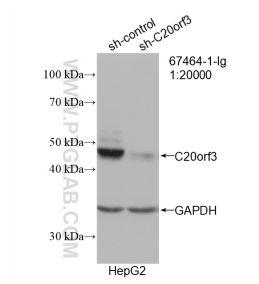
Selected Validation Data



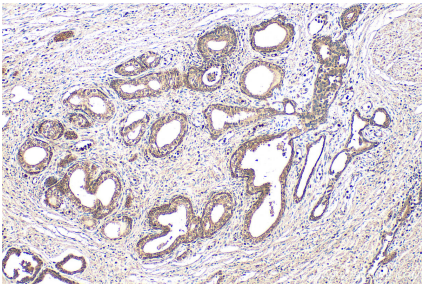
Various lysates were subjected to SDS PAGE followed by western blot with 67464-1-Ig (C20orf3/APMAP antibody) at dilution of 1:50000 incubated at room temperature for 1.5 hours.



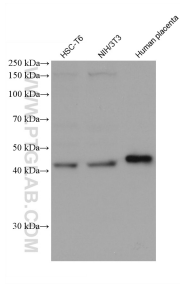
Various lysates were subjected to SDS PAGE followed by western blot with 67464-1-Ig (C20orf3/APMAP antibody) at dilution of 1:20000 incubated at room temperature for 1.5 hours.



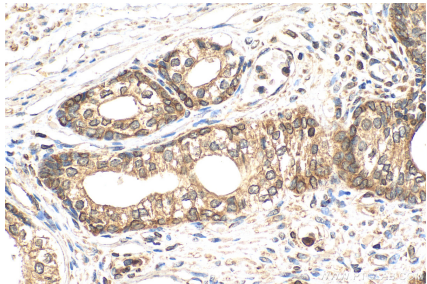
WB result of C20orf3/APMAP antibody (67464-1-Ig; 1:20000; incubated at room temperature for 1.5 hours) with sh-Control and sh-C20orf3/APMAP transfected HepG2 cells.



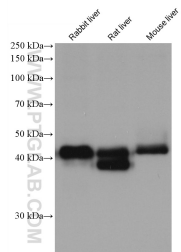
Immunohistochemical analysis of paraffin-embedded human prostate cancer tissue slide using 67464-1-Ig (C20orf3/APMAP antibody) at dilution of 1:1000 (under 10x lens). Heat mediated antigen retrieval with Tris-EDTA buffer (pH 9.0).



Various lysates were subjected to SDS PAGE followed by western blot with 67464-1-Ig (C20orf3/APMAP antibody) at dilution of 1:50000 incubated at room temperature for 1.5 hours.



Immunohistochemical analysis of paraffin-embedded human prostate cancer tissue slide using 67464-1-Ig (C20orf3/APMAP antibody) at dilution of 1:1000 (under 40x lens). Heat mediated antigen retrieval with Tris-EDTA buffer (pH 9.0).



Various lysates were subjected to SDS PAGE followed by western blot with 67464-1-Ig (C20orf3/APMAP antibody) at dilution of 1:50000 incubated at room temperature for 1.5 hours.