

For Research Use Only

# Arfaptin-1 Monoclonal antibody, PBS Only (Detector)

Catalog Number: 67461-1-PBS



## Basic Information

Catalog Number:

67461-1-PBS

Size:

1mg/ml

Source:

Mouse

Isotype:

IgG2a

Immunogen Catalog Number:

AG12097

GenBank Accession Number:

BC103759

GeneID (NCBI):

27236

UNIPROT ID:

P53367

Full Name:

ADP-ribosylation factor interacting protein 1

Calculated MW:

373 aa, 42 kDa

Observed MW:

38-42 kDa

Purification Method:

Protein A purification

CloneNo.:

2A10B3

## Applications

Tested Applications:

WB, IHC, IF/ICC, IF-P, Cytometric bead array, Indirect ELISA

Species Specificity:

human, mouse, rat

## Background Information

### Storage

Storage:

Store at -80°C.

The product is shipped with ice packs. Upon receipt, store it immediately at -80°C

Storage Buffer:

PBS Only

For technical support and original validation data for this product please contact:

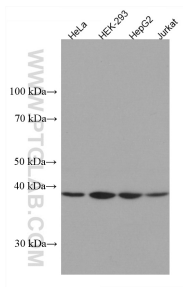
T: 4006900926

E: [Proteintech-CN@ptglab.com](mailto:Proteintech-CN@ptglab.com)

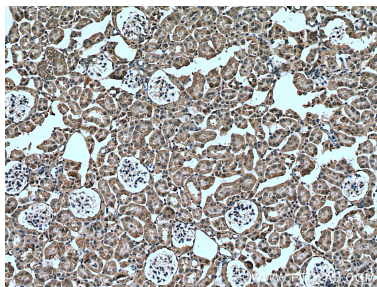
W: [ptgcn.com](http://ptgcn.com)

This product is exclusively available under Proteintech Group brand and is not available to purchase from any other manufacturer.

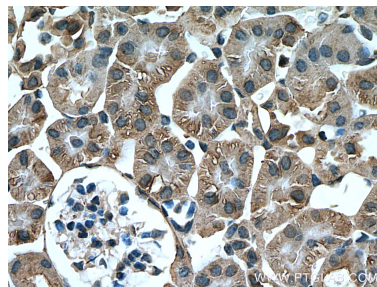
## Selected Validation Data



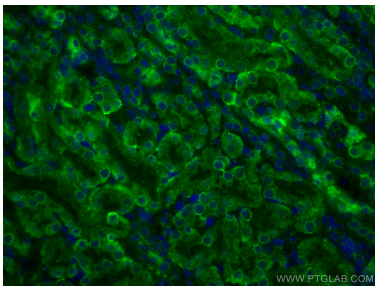
Various lysates were subjected to SDS PAGE followed by western blot with 67461-1-Ig (ARFIP1 antibody) at dilution of 1:3000 incubated at room temperature for 1.5 hours. This data was developed using the same antibody clone with 67461-1-PBS in a different storage buffer formulation.



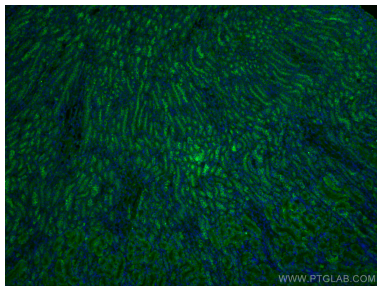
Immunohistochemical analysis of paraffin-embedded mouse kidney tissue slide using 67461-1-Ig (Arfaptin-1 antibody) at dilution of 1:400 (under 10x lens). Heat mediated antigen retrieval with Tris-EDTA buffer (pH 9.0). This data was developed using the same antibody clone with 67461-1-PBS in a different storage buffer formulation.



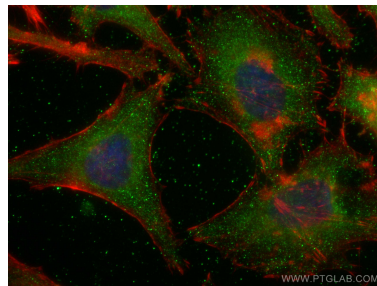
Immunohistochemical analysis of paraffin-embedded mouse kidney tissue slide using 67461-1-Ig (Arfaptin-1 antibody) at dilution of 1:400 (under 40x lens). Heat mediated antigen retrieval with Tris-EDTA buffer (pH 9.0). This data was developed using the same antibody clone with 67461-1-PBS in a different storage buffer formulation.



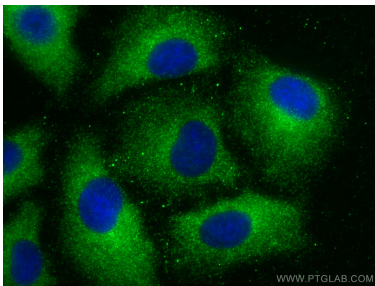
Immunofluorescent analysis of (4% PFA) fixed mouse kidney tissue using Arfaptin-1 antibody (67461-1-Ig, Clone: 2A10B3 ) at dilution of 1:400 and CoraLite®488-Conjugated AffiniPure Goat Anti-Mouse IgG(H+L). This data was developed using the same antibody clone with 67461-1-PBS in a different storage buffer formulation.



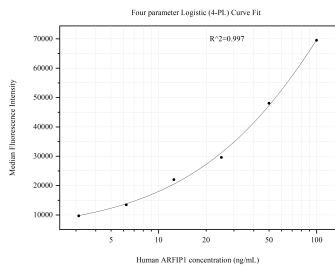
Immunofluorescent analysis of (4% PFA) fixed mouse kidney tissue using Arfaptin-1 antibody (67461-1-Ig, Clone: 2A10B3 ) at dilution of 1:400 and CoraLite®488-Conjugated AffiniPure Goat Anti-Mouse IgG(H+L). This data was developed using the same antibody clone with 67461-1-PBS in a different storage buffer formulation.



Immunofluorescent analysis of (-20°C Ethanol) fixed HeLa cells using Arfaptin-1 antibody (67461-1-Ig, Clone: 2A10B3 ) at dilution of 1:800 and CoraLite®488-Conjugated AffiniPure Goat Anti-Mouse IgG(H+L), CL594-Phalloidin (red). This data was developed using the same antibody clone with 67461-1-PBS in a different storage buffer formulation.



Immunofluorescent analysis of (-20°C Methanol) fixed A549 cells using Arfaptin-1 antibody (67461-1-Ig, Clone: 2A10B3 ) at dilution of 1:400 and CoraLite®488-Conjugated AffiniPure Goat Anti-Mouse IgG(H+L). This data was developed using the same antibody clone with 67461-1-PBS in a different storage buffer formulation.



Cytometric bead array standard curve of MP51228-2, Arfaptin-1 Monoclonal Matched Antibody Pair, PBS Only. Capture antibody: 67461-3-PBS. Detection antibody: 67461-1-PBS. Standard: Ag12097. Range: 3.125-100 ng/mL.